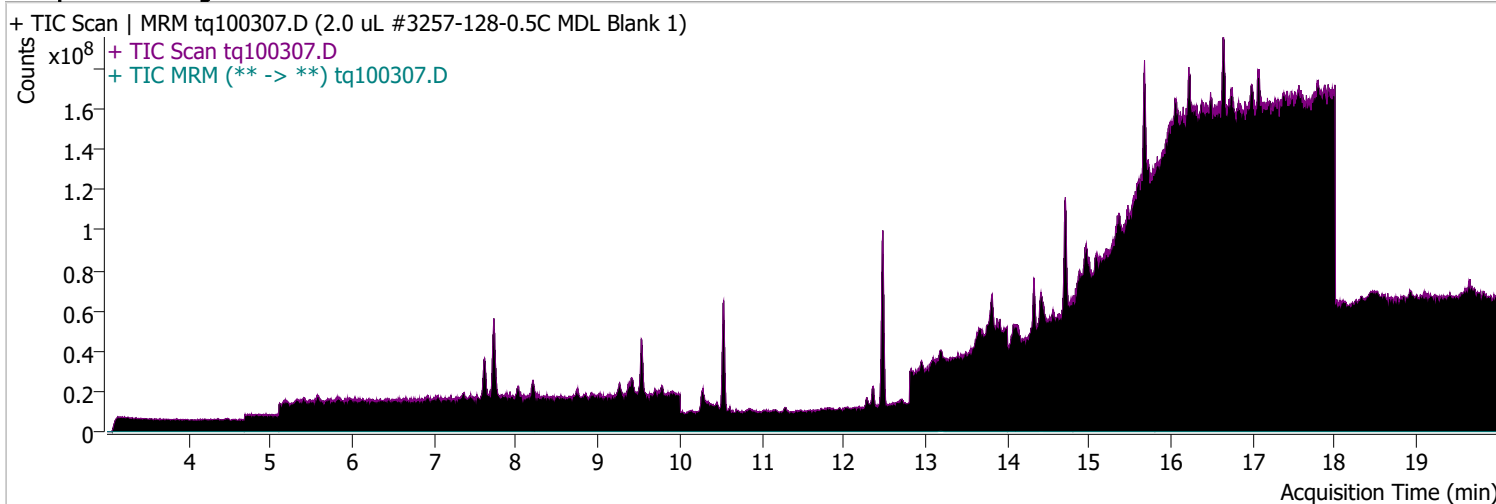


# Quantitative Analysis Sample Report

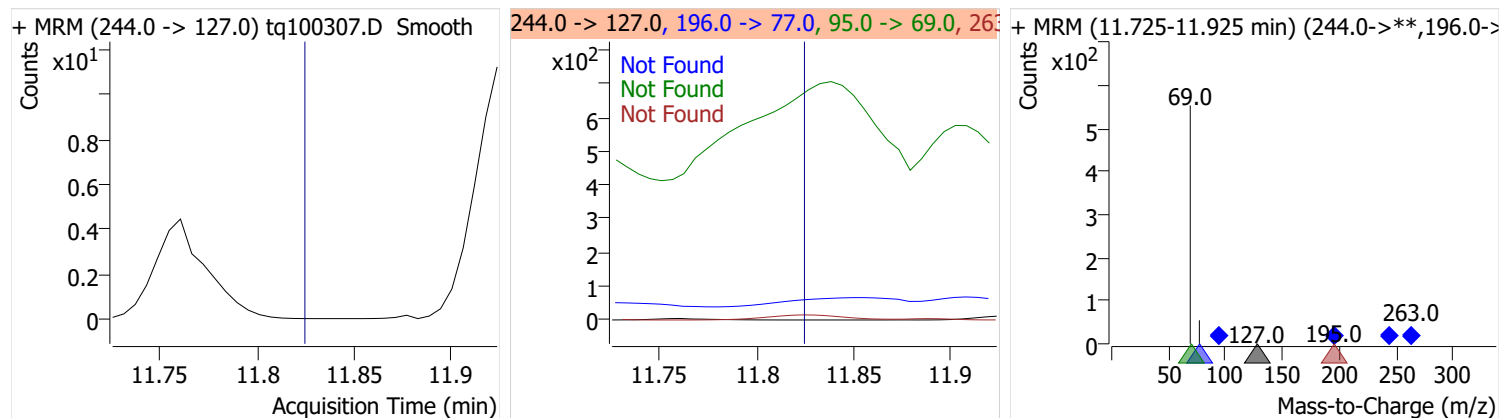
Batch Path	D:\MassHunter\GCMS\1\data\04OCT22\QuantResults\MDLMARKES.batch.bin		
Analysis Time	10/12/2022 1:21 PM	Analyst Name	ES-AREA1\US32_USR_INS22923
Report Time	10/20/2022 3:03:45 PM	Reporter Name	ES-AREA1\US32_USR_INS22923
Last Calib Update	10/3/2022 8:55 AM	Batch State	Processed
Quant Batch Version	10.1	Quant Report Version	10.1
Acq. Time	10/3/2022 3:38 PM	Data File	tq100307.D
Sample Type	Sample	Sample Name	2.0 uL #3257-128-0.5C MDL Blank 1
Dilution	1	Acq. Method	tq22m0930marks

## Sample Chromatogram

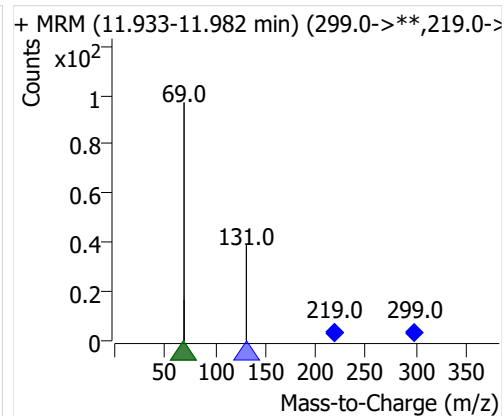
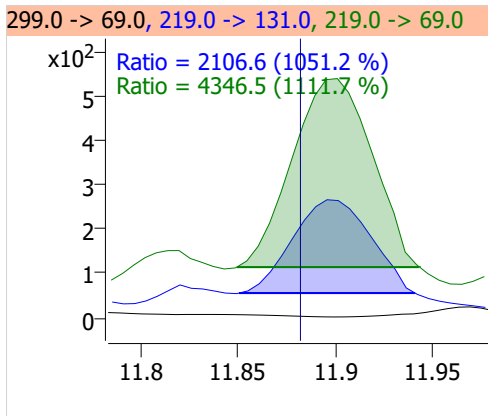
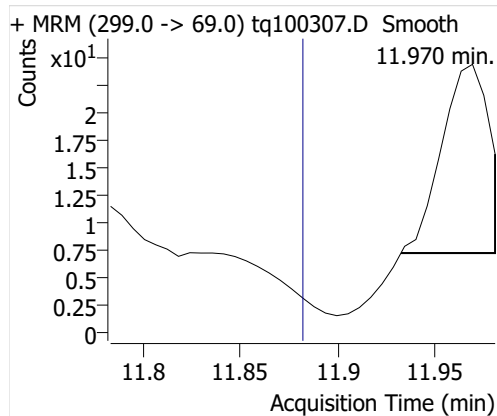


Compound	ISTD	RT	Resp.	ISTD Resp.	Resp. Ratio	Final Conc	Units
4:2 FTOH	6:2 FTOH-C13			57209		ND	ng
5:2sFTOH	6:2 FTOH-C13	11.970	28	57209	0.0005	0.0021	ng
7:2sFTOH	6:2 FTOH-C13	13.246	36	57209	0.0006	0.0013	ng
6:2 FTOH	6:2 FTOH-C13	13.209	1173	57209	0.0205	0.0203	ng
8:2 FTOH-C13	6:2 FTOH-C13	14.412	22543	57209	0.3940	1.1293	ng
8:2 FTOH	6:2 FTOH-C13	14.413	187	57209	0.0033	0.0118	ng
10:2 FTOH	6:2 FTOH-C13	15.477	102	57209	0.0018	0.0171	ng
12:2 FTOH	6:2 FTOH-C13	16.458	193	57209	0.0034	0.0089	ng
NMeFOSA	6:2 FTOH-C13			57209		ND	ng
NEtFOSA	6:2 FTOH-C13	18.931	85	57209	0.0015	0.0012	ng

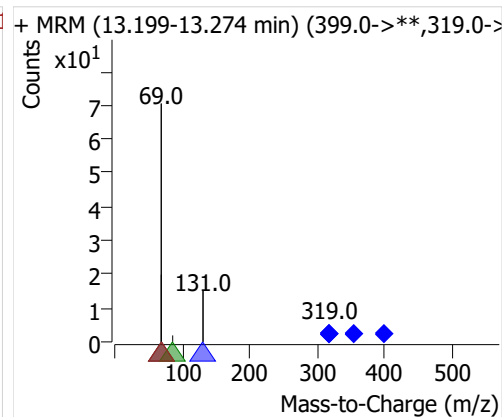
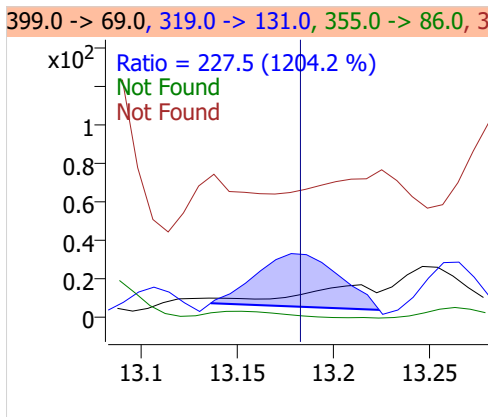
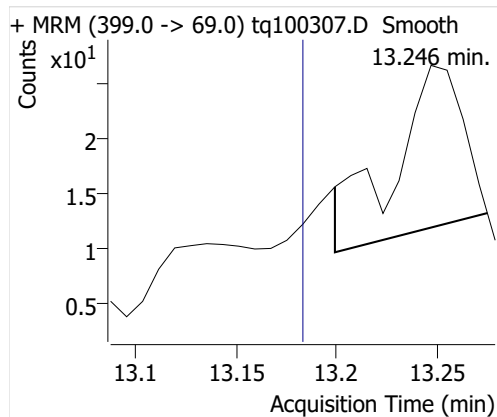
## 4:2 FTOH



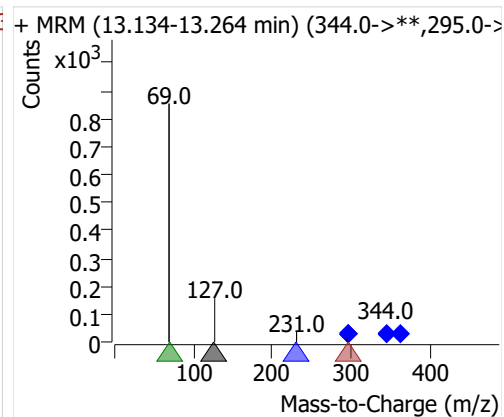
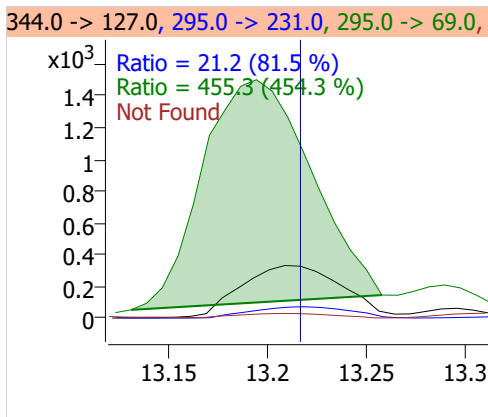
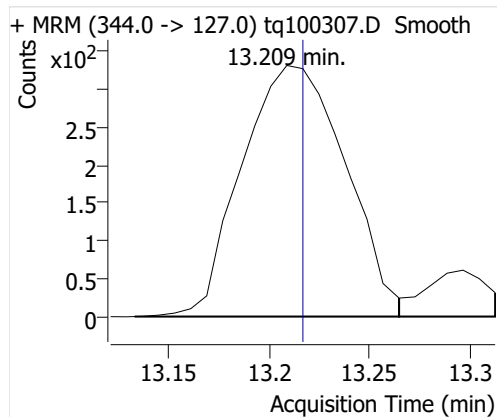
## 5:2sFTOH



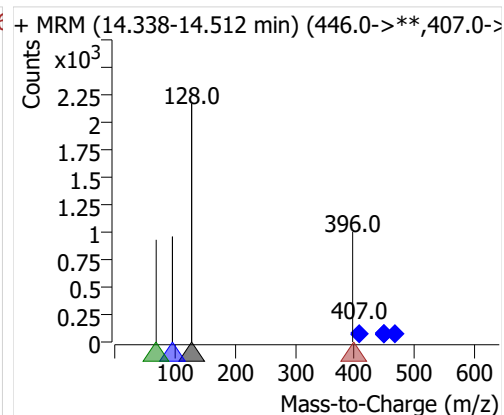
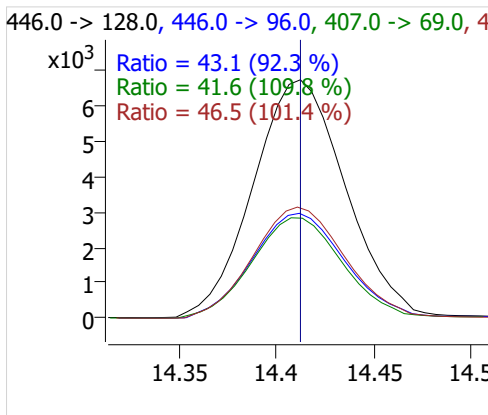
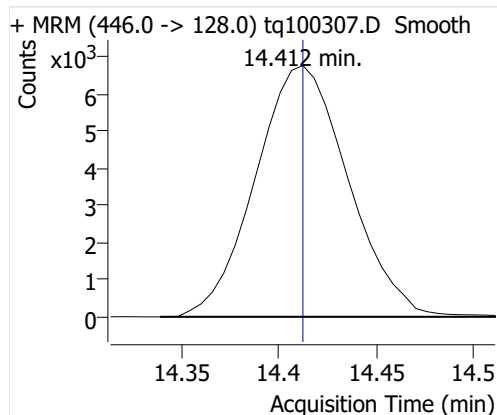
## 7:2sFTOH



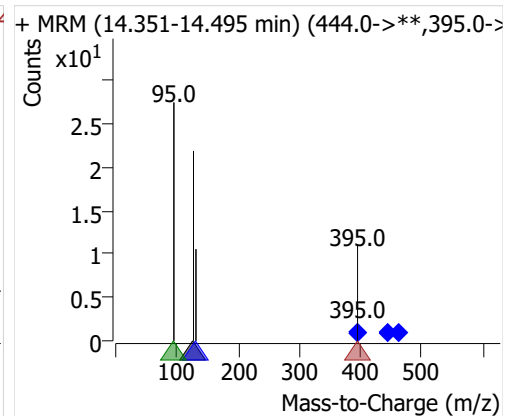
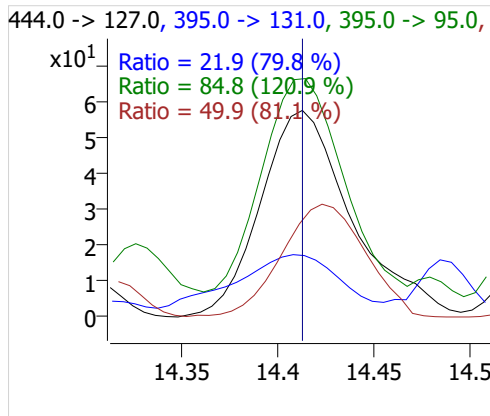
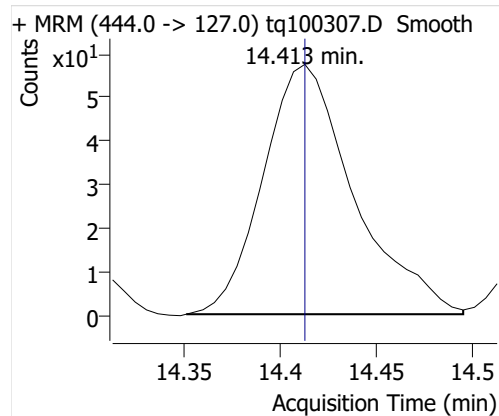
## 6:2 FTOH



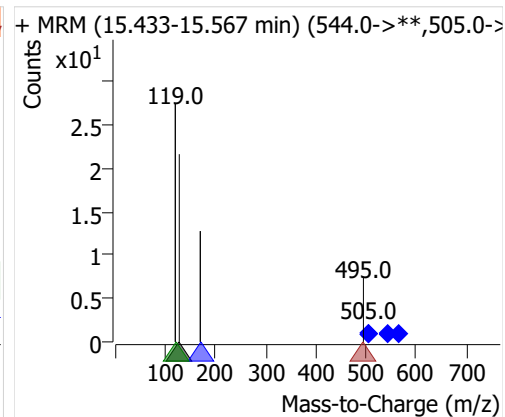
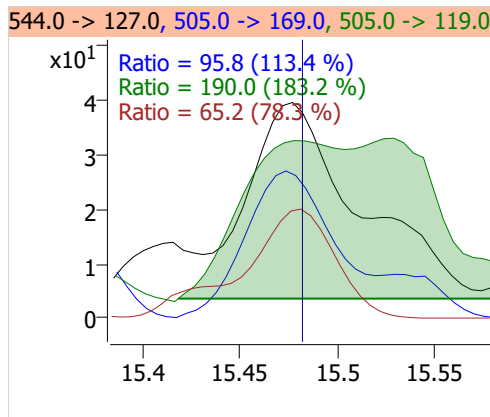
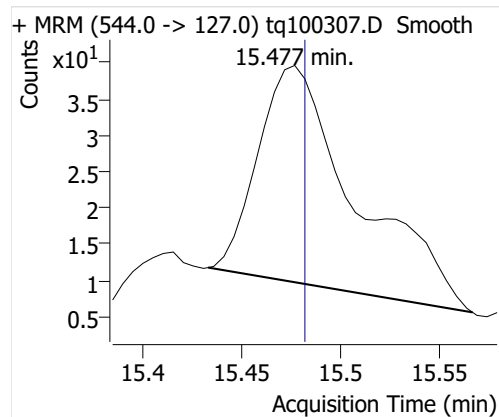
## 8:2 FTOH-C13



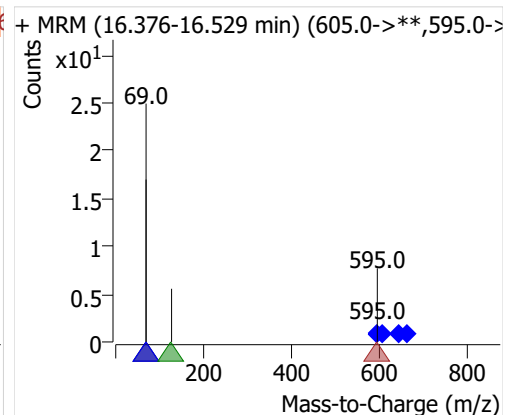
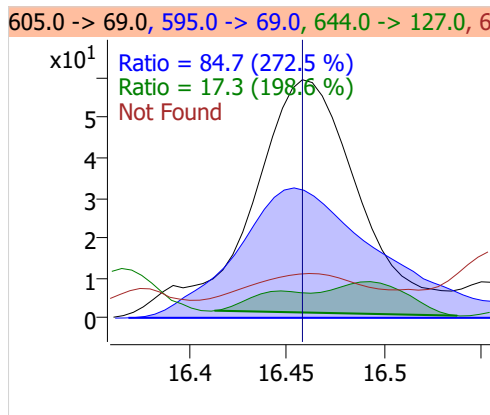
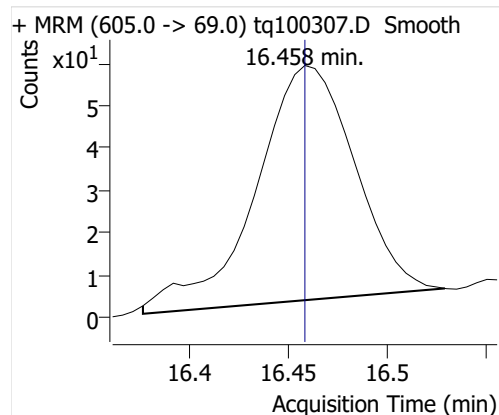
## 8:2 FTOH



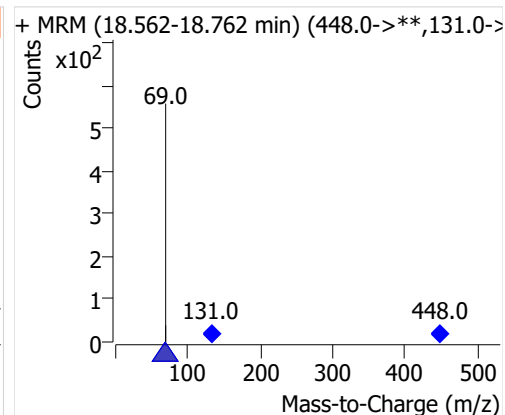
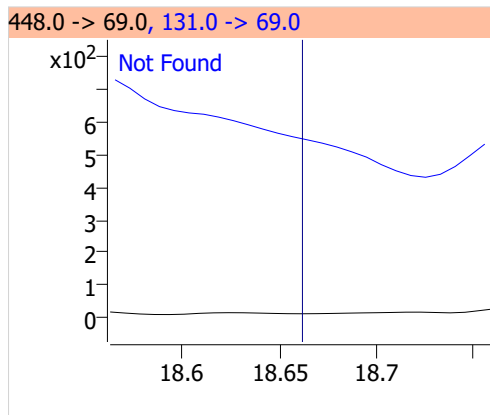
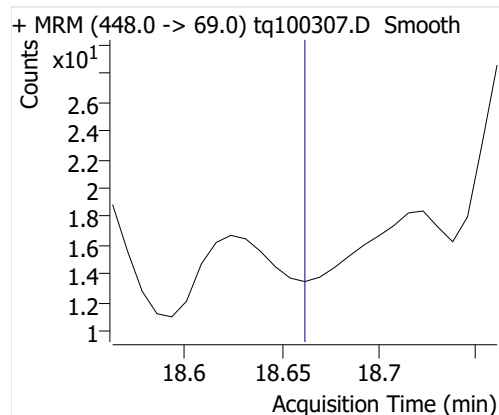
## 10:2 FTOH



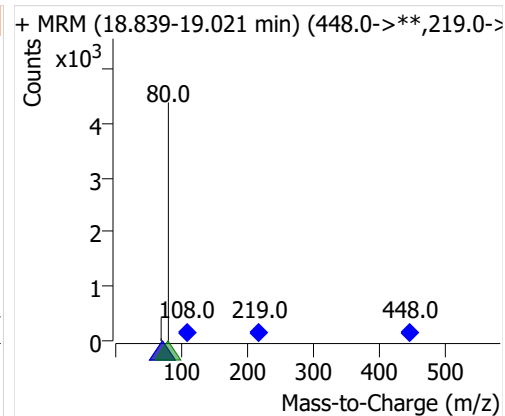
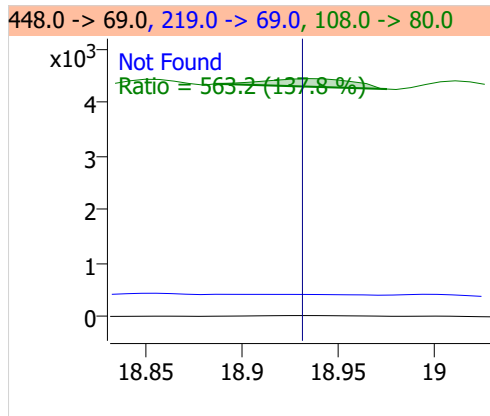
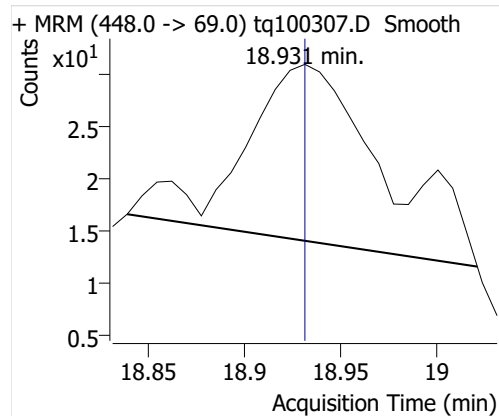
## 12:2 FTOH



## NMeFOSA



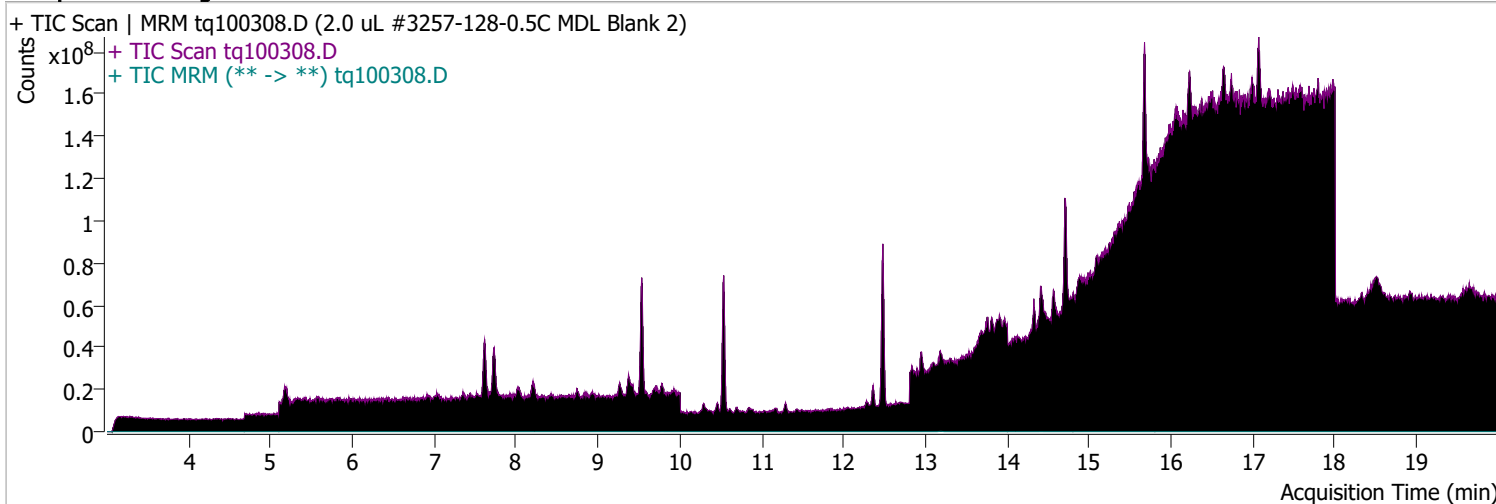
## NETFOSA



# Quantitative Analysis Sample Report

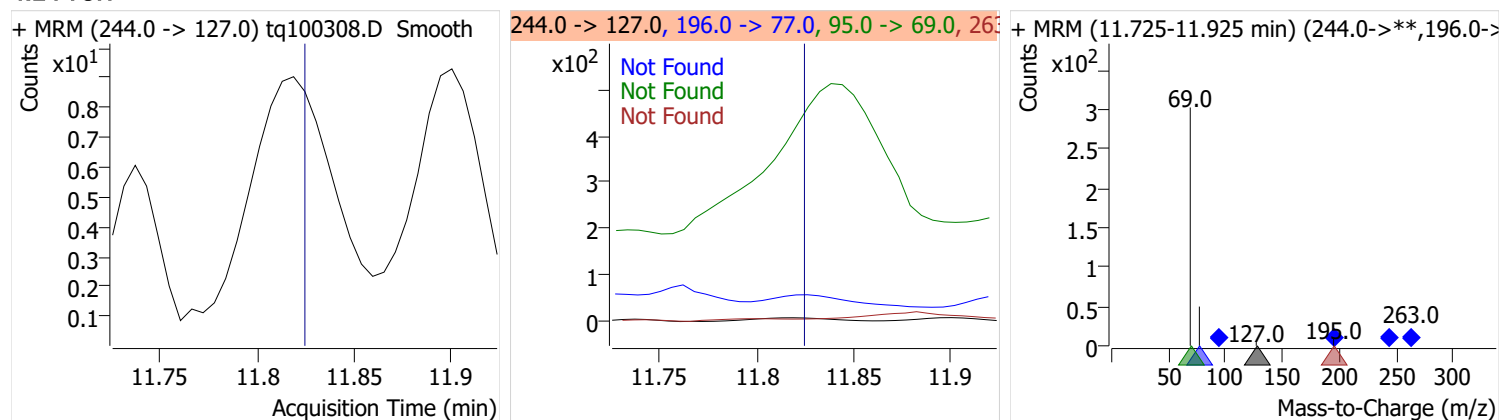
<b>Batch Path</b>	D:\MassHunter\GCMS\1\data\04OCT22\QuantResults\MDLMARKES.batch.bin		
<b>Analysis Time</b>	10/12/2022 1:21 PM	<b>Analyst Name</b>	ES-AREA1\US32_USR_INS22923
<b>Report Time</b>	10/20/2022 3:03:48 PM	<b>Reporter Name</b>	ES-AREA1\US32_USR_INS22923
<b>Last Calib Update</b>	10/3/2022 8:55 AM	<b>Batch State</b>	Processed
<b>Quant Batch Version</b>	10.1	<b>Quant Report Version</b>	10.1
<b>Acq. Time</b>	10/3/2022 4:02 PM	<b>Data File</b>	tq100308.D
<b>Sample Type</b>	Sample	<b>Sample Name</b>	2.0 uL #3257-128-0.5C MDL Blank 2
<b>Dilution</b>	1	<b>Acq. Method</b>	tq22m0930marks

## Sample Chromatogram

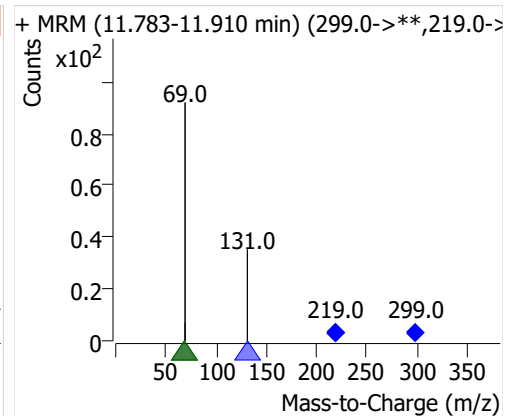
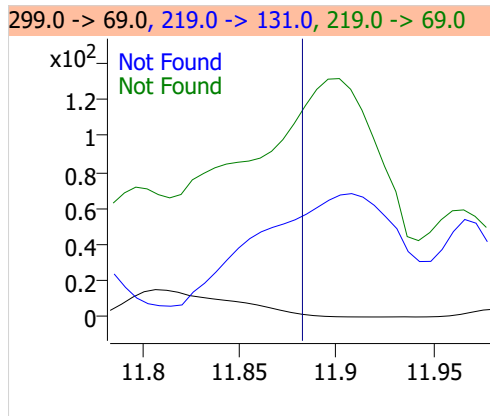
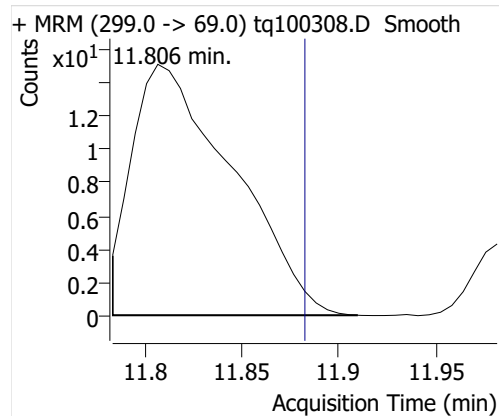


Compound	ISTD	RT	Resp.	ISTD Resp.	Resp. Ratio	Final Conc	Units
4:2 FTOH	6:2 FTOH-C13			55533		ND	ng
5:2sFTOH	6:2 FTOH-C13	11.806	55	55533	0.0010	0.0042	ng
7:2sFTOH	6:2 FTOH-C13	13.159	26	55533	0.0005	0.0010	ng
6:2 FTOH	6:2 FTOH-C13	13.217	4373	55533	0.0787	0.0780	ng
8:2 FTOH-C13	6:2 FTOH-C13	14.412	21705	55533	0.3908	1.1201	ng
8:2 FTOH	6:2 FTOH-C13	14.419	132	55533	0.0024	0.0085	ng
10:2 FTOH	6:2 FTOH-C13	15.559	45	55533	0.0008	0.0078	ng
12:2 FTOH	6:2 FTOH-C13	16.458	130	55533	0.0023	0.0062	ng
NMeFOSA	6:2 FTOH-C13			55533		ND	ng
NetFOSA	6:2 FTOH-C13	18.924	115	55533	0.0021	0.0017	ng

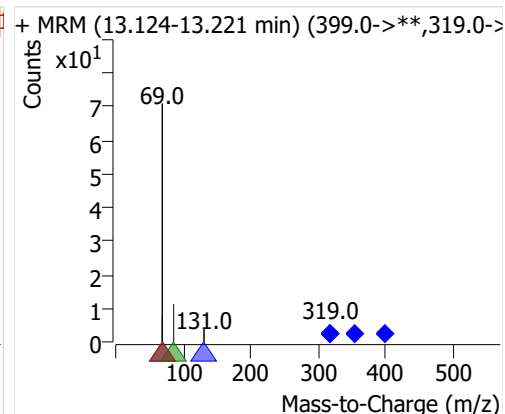
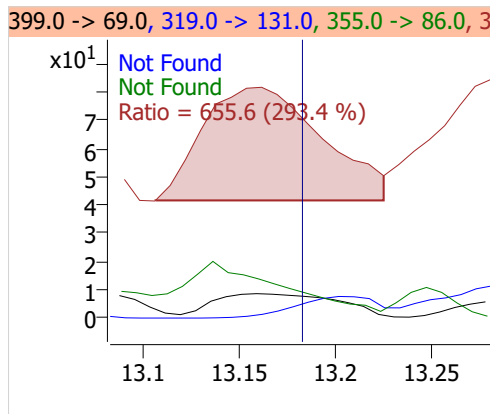
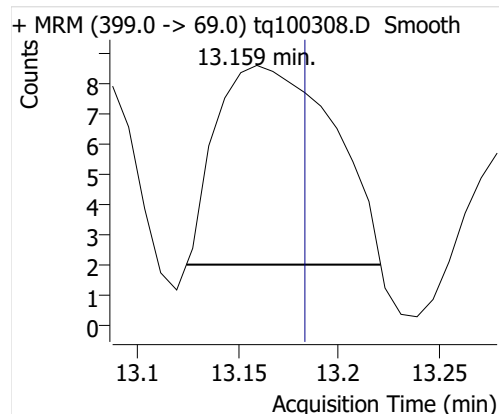
## 4:2 FTOH



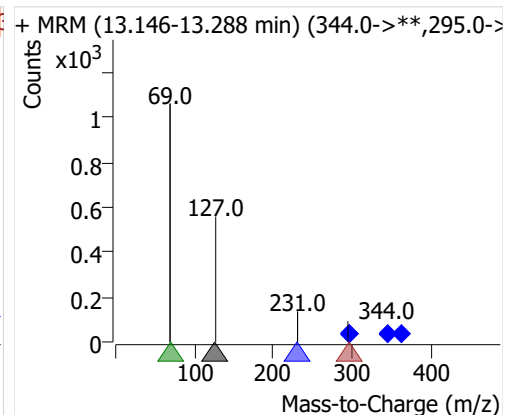
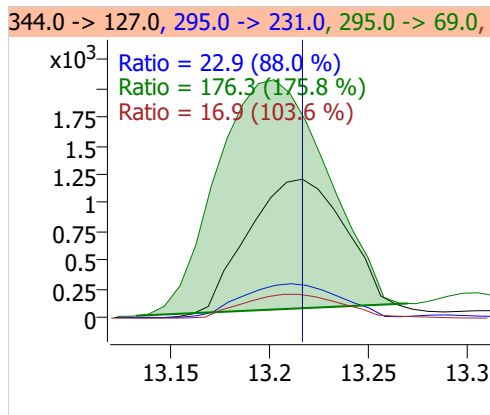
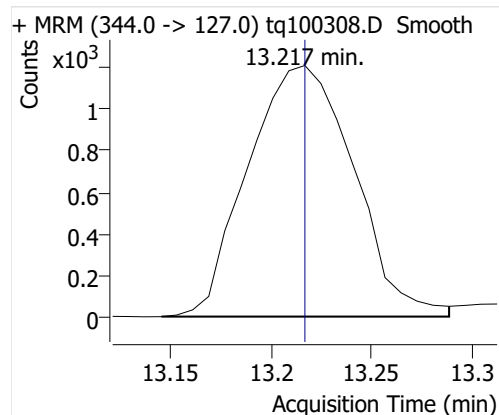
## 5:2sFTOH



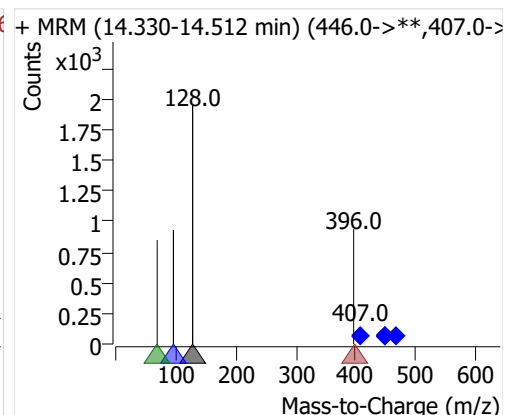
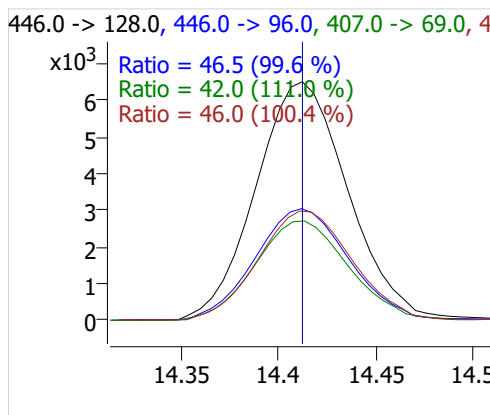
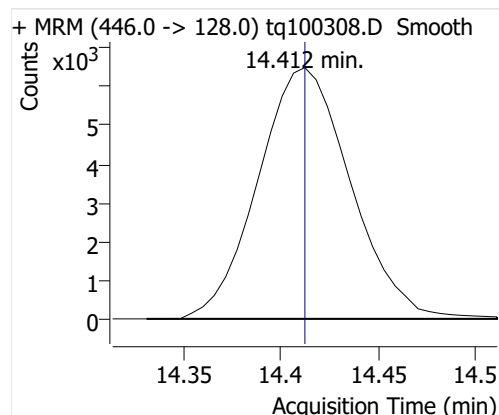
## 7:2sFTOH



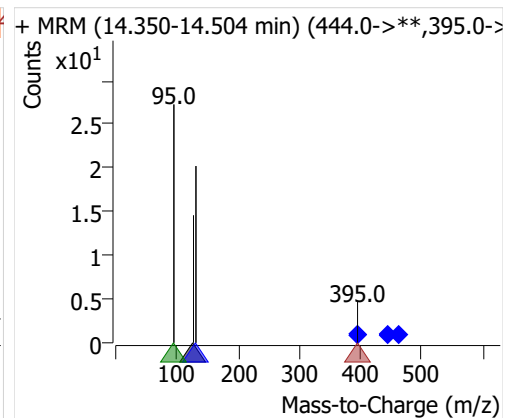
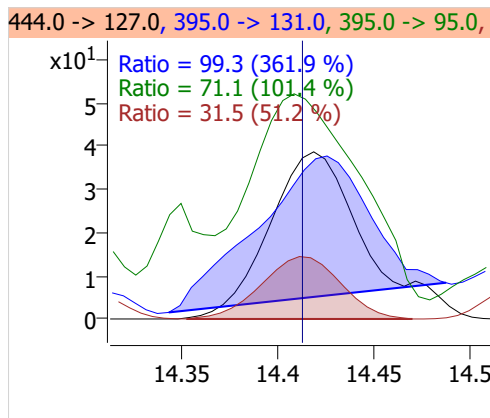
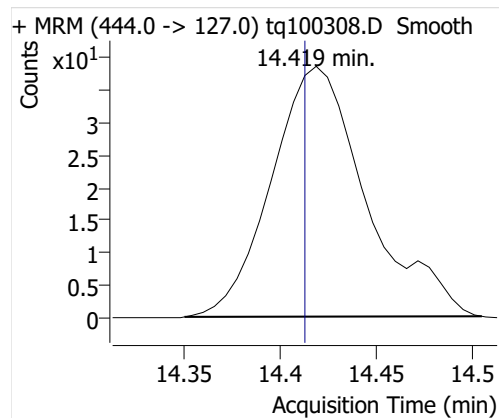
## 6:2 FTOH



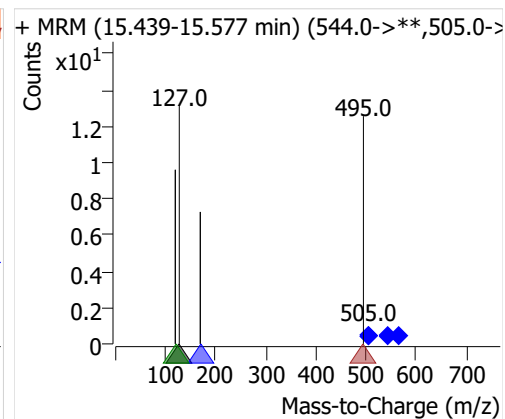
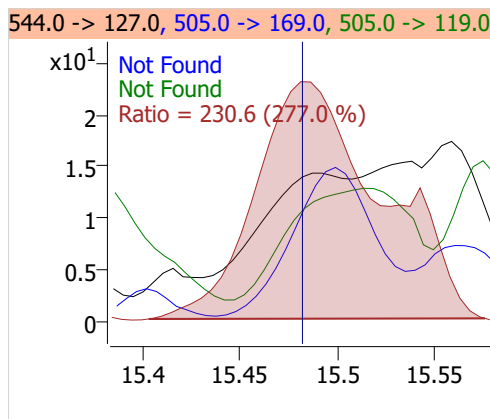
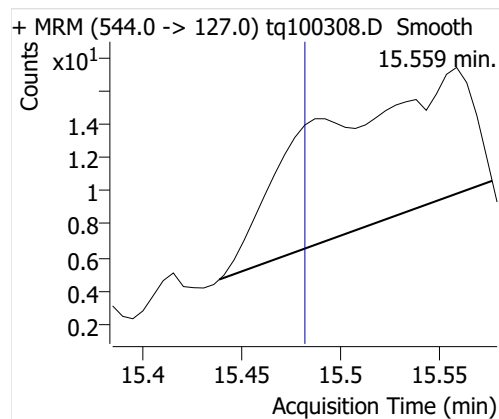
## 8:2 FTOH-C13



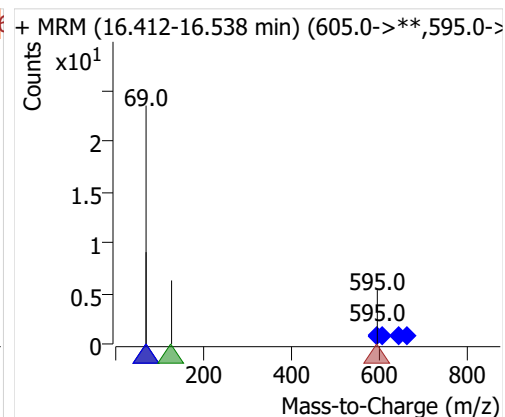
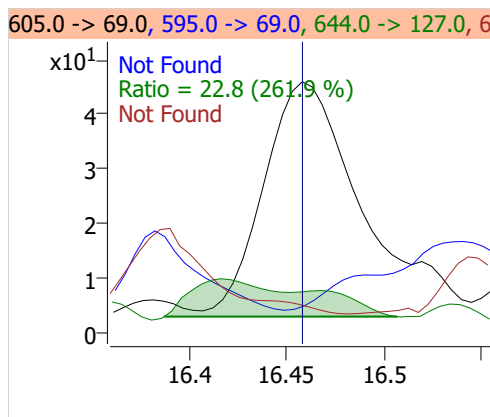
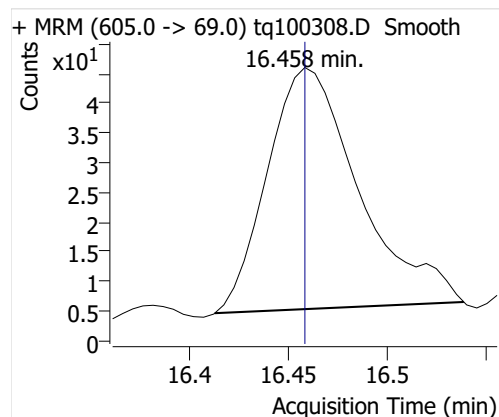
## 8:2 FTOH



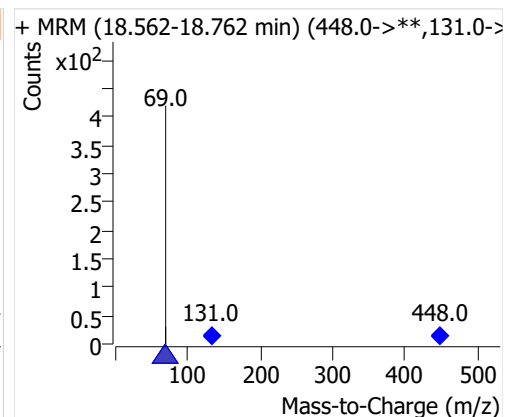
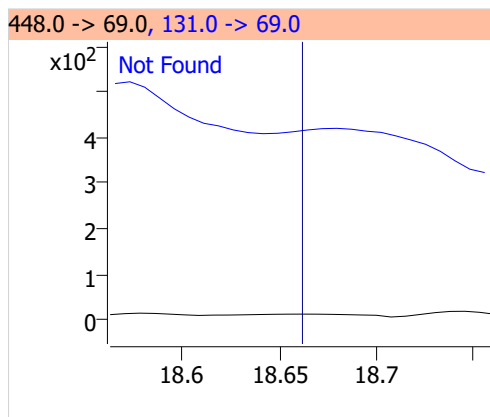
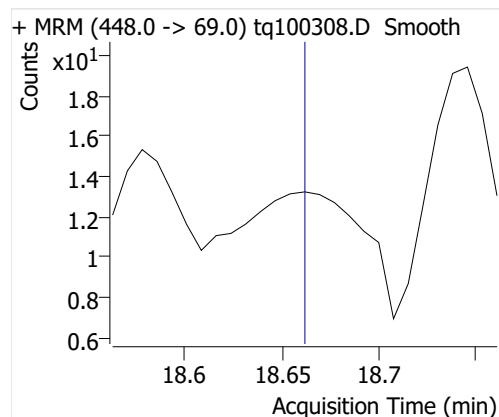
## 10:2 FTOH



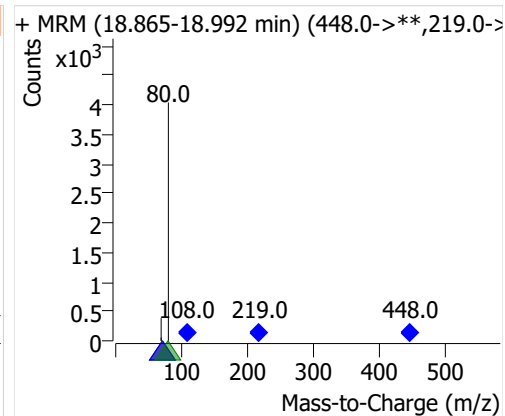
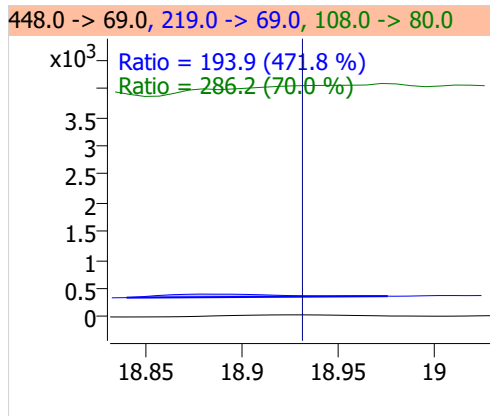
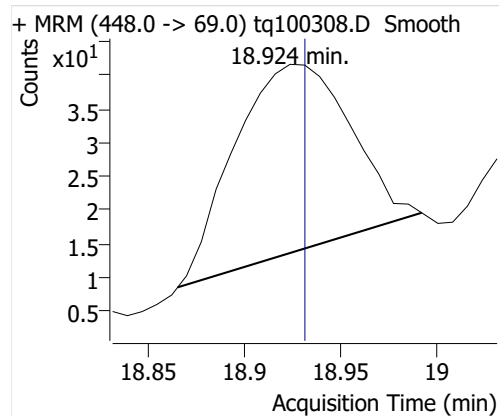
## 12:2 FTOH



## NMeFOSA



## NETFOSA

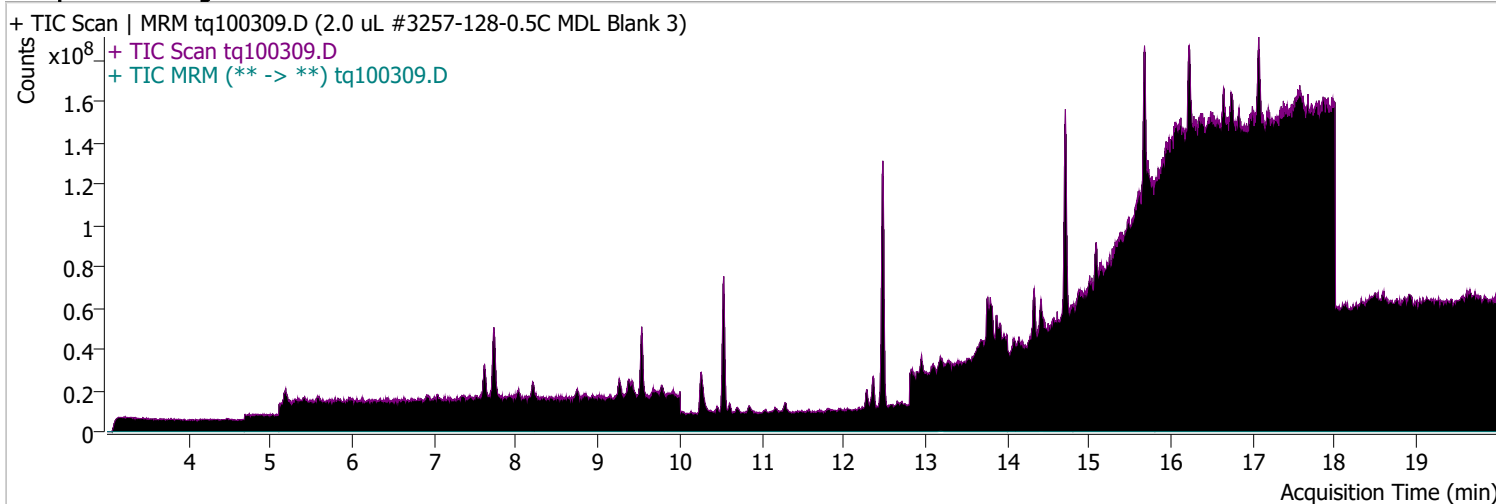




# Quantitative Analysis Sample Report

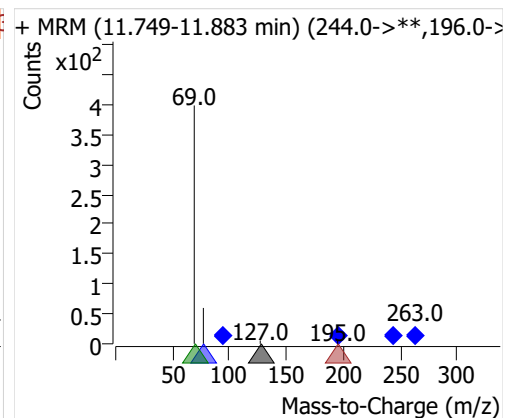
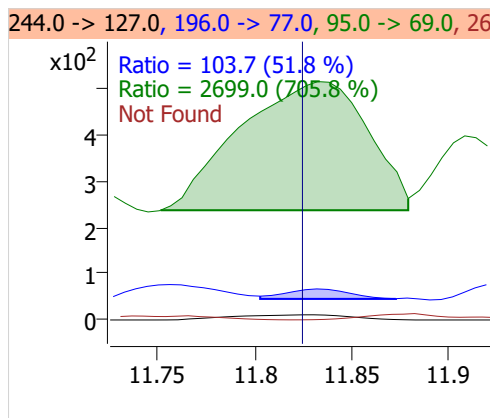
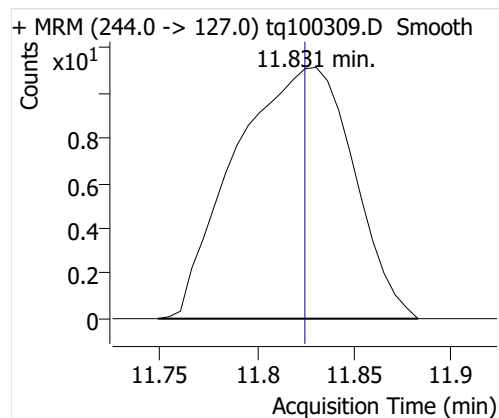
**Batch Path** D:\MassHunter\GCMS\1\data\04OCT22\QuantResults\MDLMARKES.batch.bin  
**Analysis Time** 10/12/2022 1:21 PM **Analyst Name** ES-AREA1\US32\_USR\_INS22923  
**Report Time** 10/20/2022 3:03:49 PM **Reporter Name** ES-AREA1\US32\_USR\_INS22923  
**Last Calib Update** 10/3/2022 8:55 AM **Batch State** Processed  
**Quant Batch Version** 10.1 **Quant Report Version** 10.1  
**Acq. Time** 10/3/2022 4:26 PM **Data File** tq100309.D  
**Sample Type** Sample **Sample Name** 2.0 uL #3257-128-0.5C MDL Blank 3  
**Dilution** 1 **Acq. Method** tq22m0930marks

## Sample Chromatogram

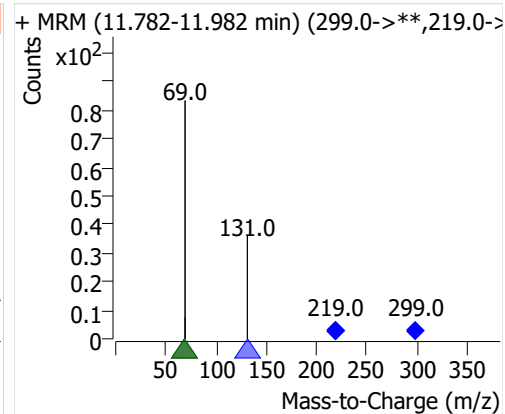
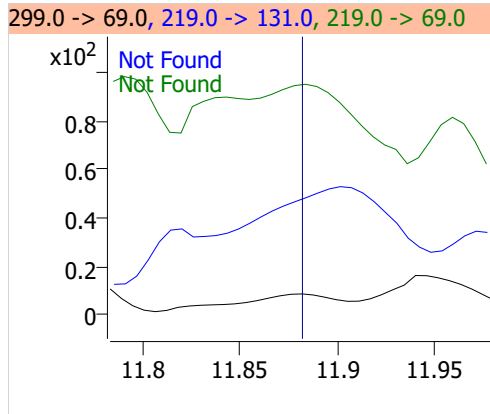
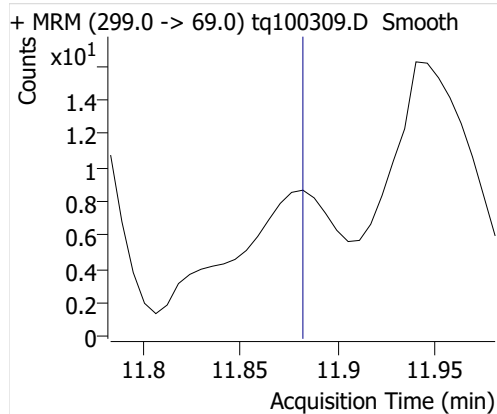


Compound	ISTD	RT	Resp.	ISTD Resp.	Resp. Ratio	Final Conc	Units
4:2 FTOH	6:2 FTOH-C13	11.831	47	54167	0.0009	0.0016	ng
5:2sFTOH	6:2 FTOH-C13			54167		ND	ng
7:2sFTOH	6:2 FTOH-C13			54167		ND	ng
6:2 FTOH	6:2 FTOH-C13	13.217	3692	54167	0.0682	0.0675	ng
8:2 FTOH-C13	6:2 FTOH-C13	14.412	20615	54167	0.3806	1.0907	ng
8:2 FTOH	6:2 FTOH-C13	14.413	89	54167	0.0016	0.0059	ng
10:2 FTOH	6:2 FTOH-C13	15.477	27	54167	0.0005	0.0048	ng
12:2 FTOH	6:2 FTOH-C13	16.453	154	54167	0.0028	0.0075	ng
NMeFOSA	6:2 FTOH-C13	18.662	99	54167	0.0018	0.0065	ng
NetFOSA	6:2 FTOH-C13	18.931	90	54167	0.0017	0.0014	ng

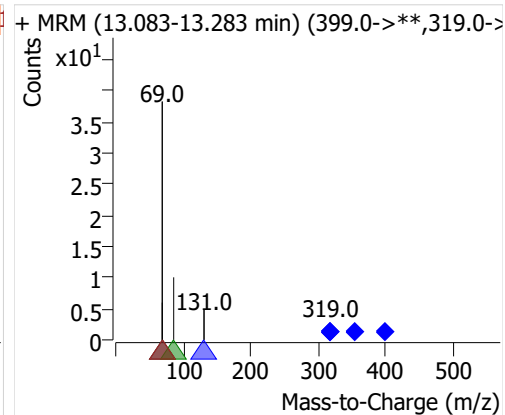
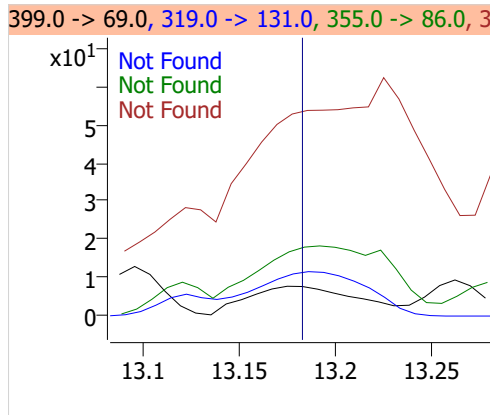
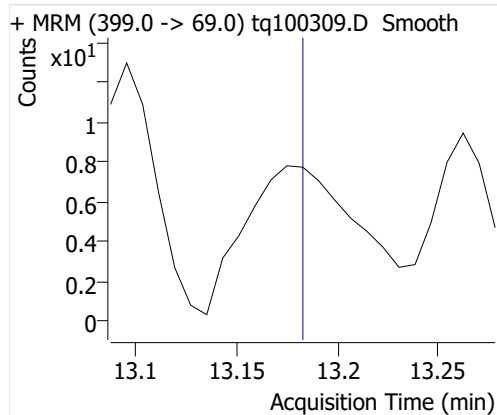
## 4:2 FTOH



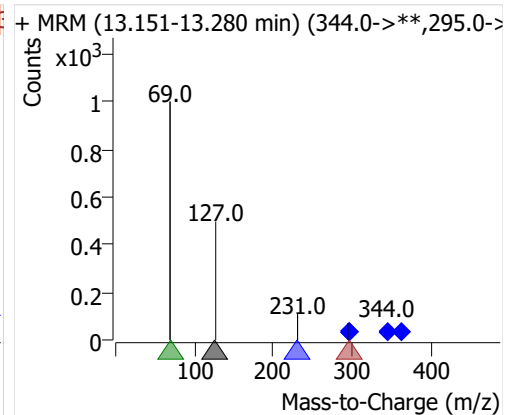
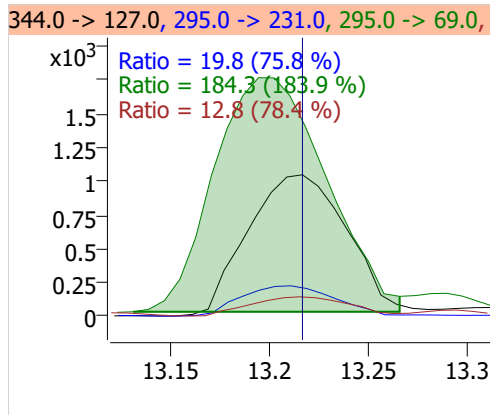
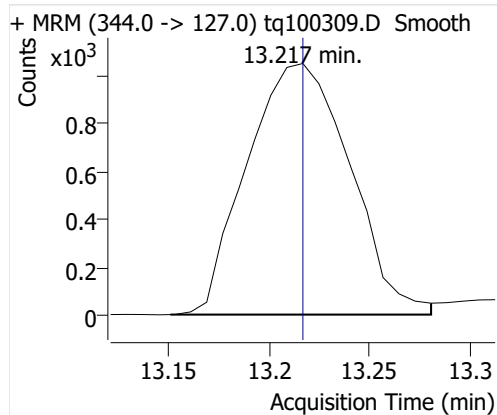
## 5:2sFTOH



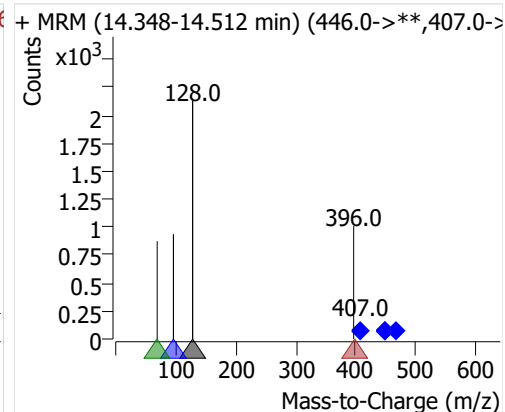
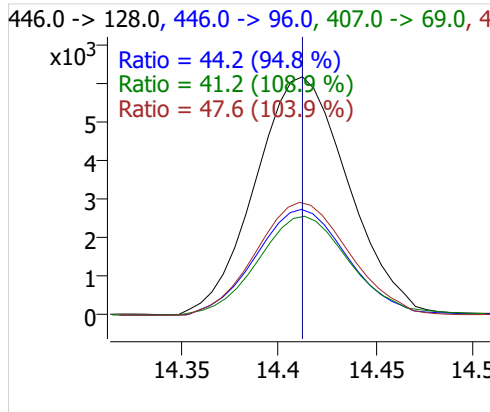
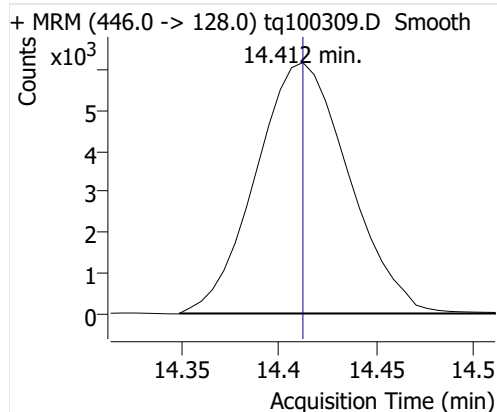
## 7:2sFTOH



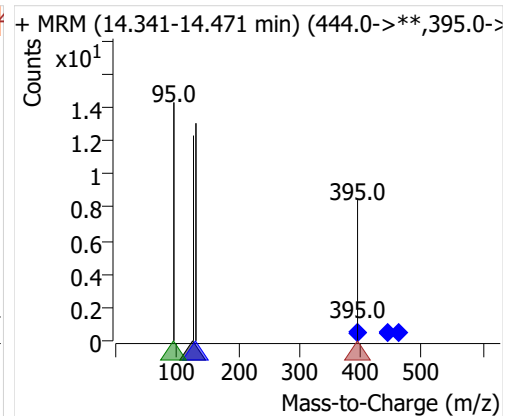
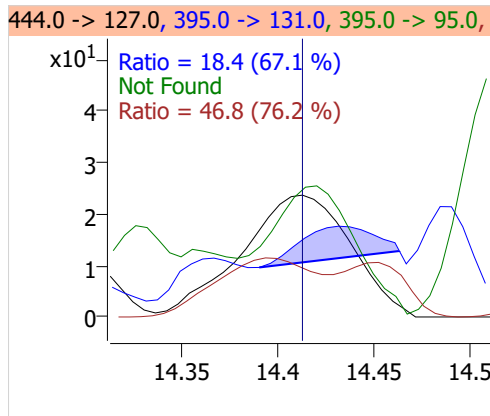
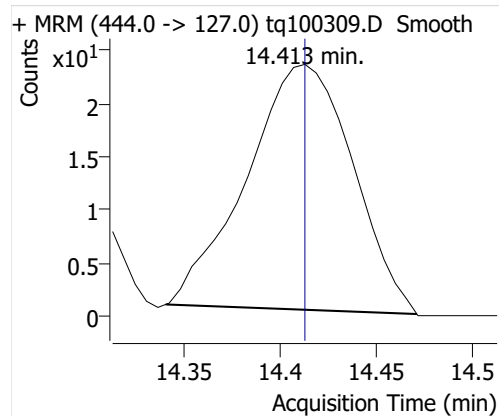
## 6:2 FTOH



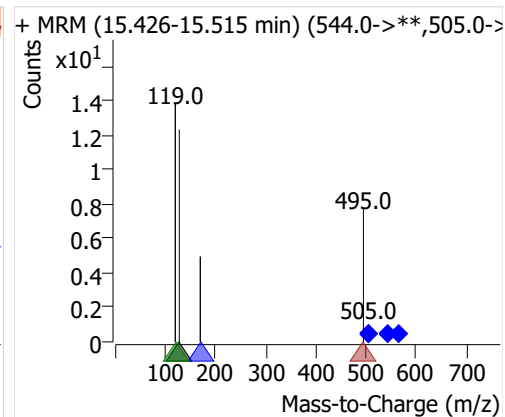
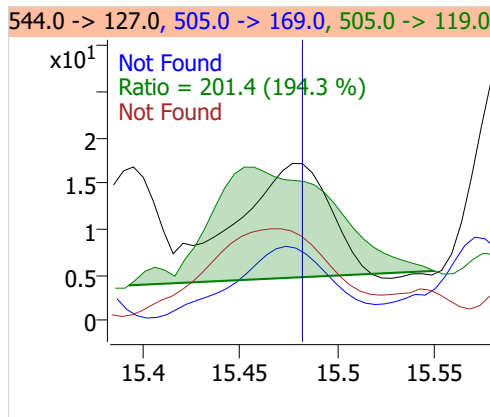
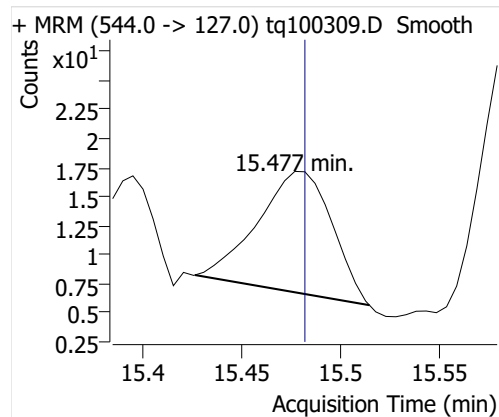
## 8:2 FTOH-C13



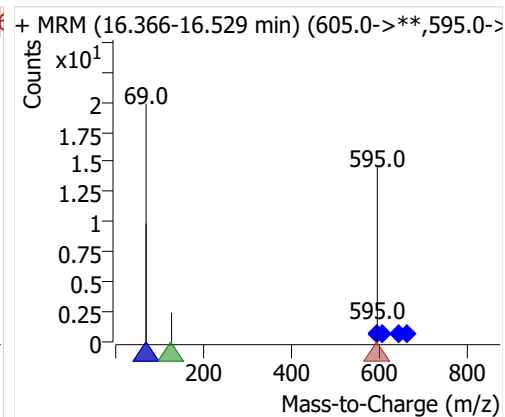
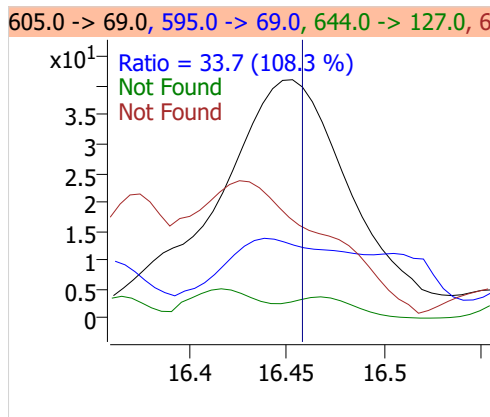
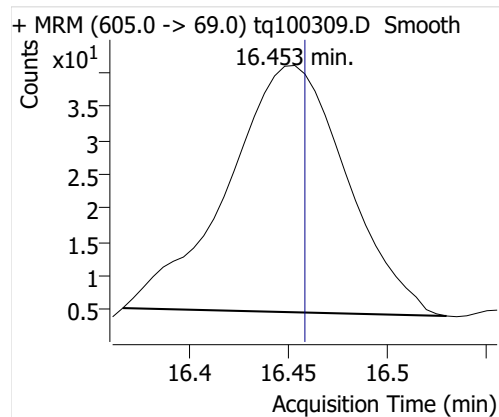
## 8:2 FTOH



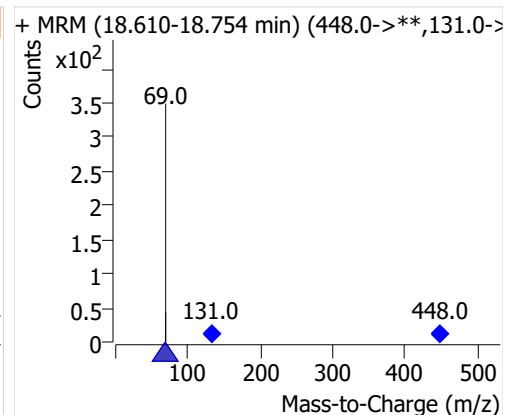
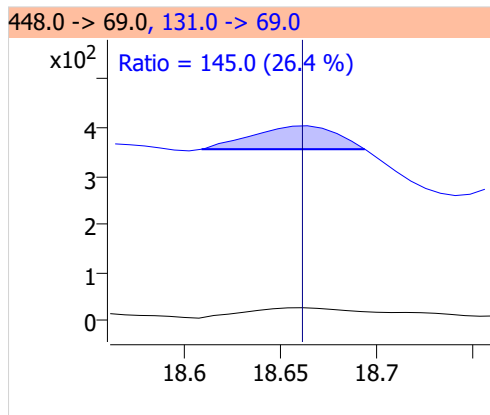
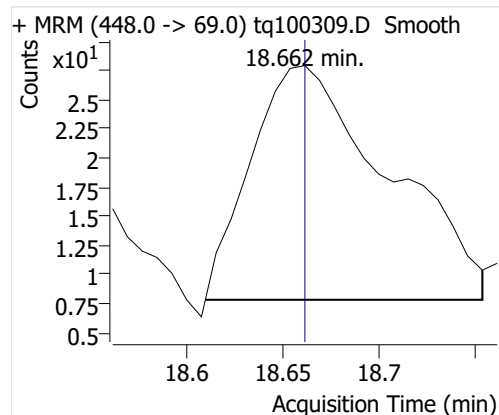
## 10:2 FTOH



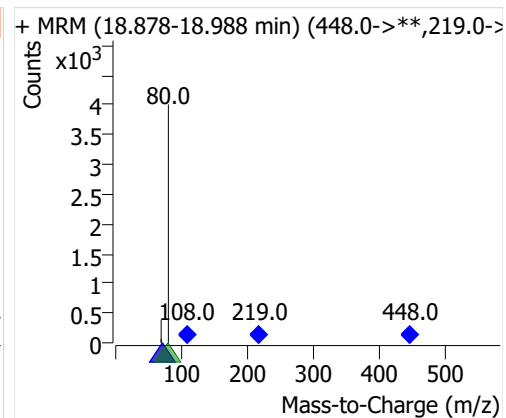
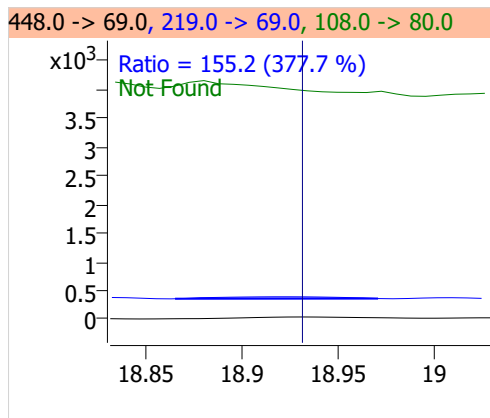
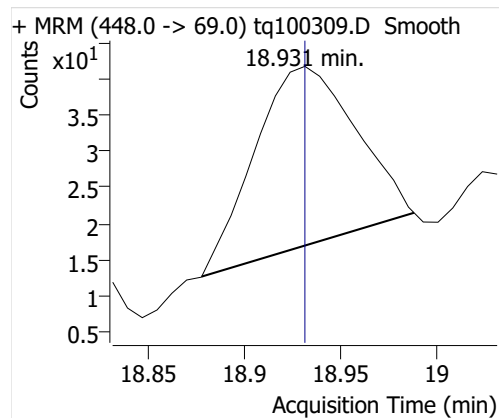
## 12:2 FTOH



## NMeFOSA



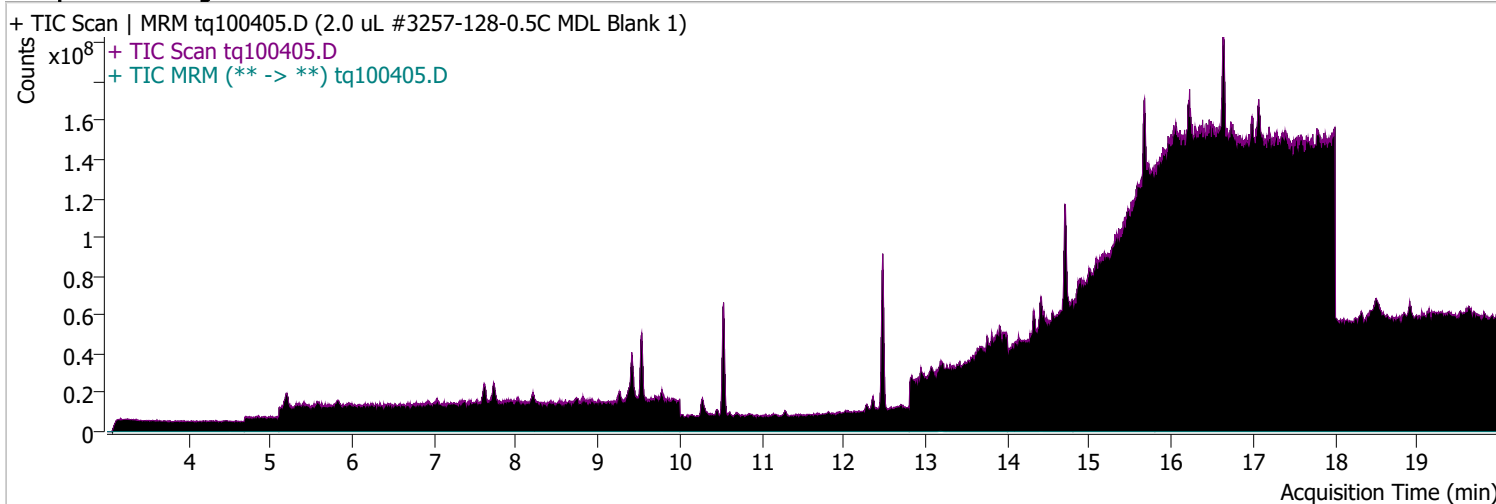
## NetFOSA



# Quantitative Analysis Sample Report

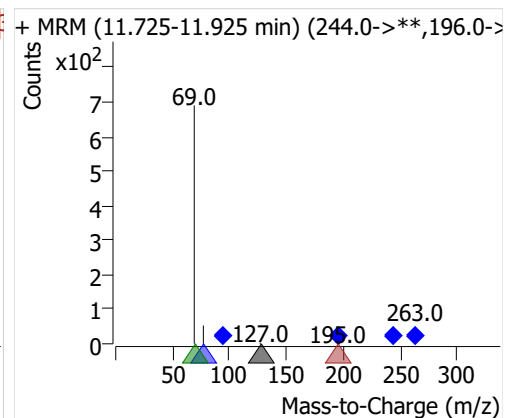
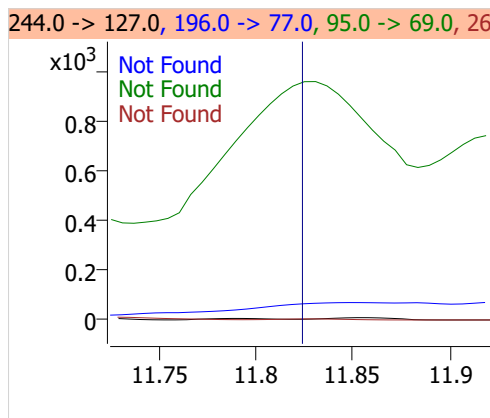
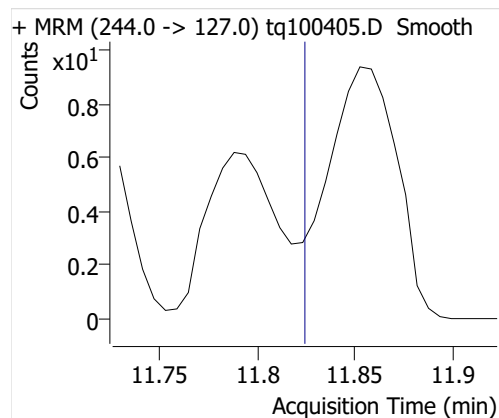
<b>Batch Path</b>	D:\MassHunter\GCMS\1\data\04OCT22\QuantResults\MDLMARKES.batch.bin		
<b>Analysis Time</b>	10/12/2022 1:21 PM	<b>Analyst Name</b>	ES-AREA1\US32_USR_INS22923
<b>Report Time</b>	10/20/2022 3:03:50 PM	<b>Reporter Name</b>	ES-AREA1\US32_USR_INS22923
<b>Last Calib Update</b>	10/3/2022 8:55 AM	<b>Batch State</b>	Processed
<b>Quant Batch Version</b>	10.1	<b>Quant Report Version</b>	10.1
<b>Acq. Time</b>	10/4/2022 11:32 AM	<b>Data File</b>	tq100405.D
<b>Sample Type</b>	Sample	<b>Sample Name</b>	2.0 uL #3257-128-0.5C MDL Blank 1
<b>Dilution</b>	1	<b>Acq. Method</b>	tq22m0930marks

## Sample Chromatogram

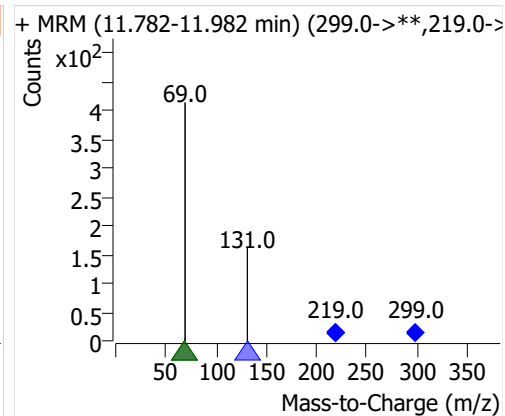
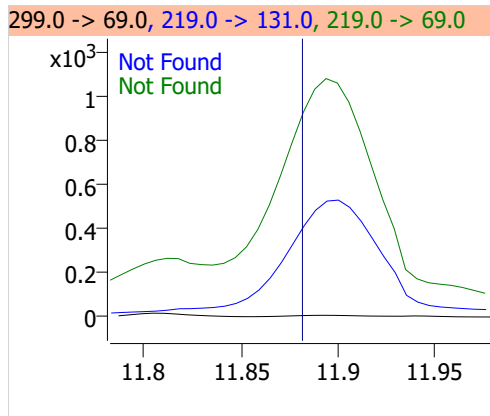
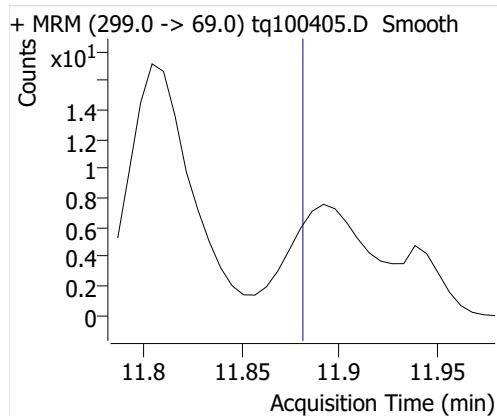


Compound	ISTD	RT	Resp.	ISTD Resp.	Resp. Ratio	Final Conc	Units
4:2 FTOH	6:2 FTOH-C13			52183		ND	ng
5:2sFTOH	6:2 FTOH-C13			52183		ND	ng
7:2sFTOH	6:2 FTOH-C13			52183		ND	ng
6:2 FTOH	6:2 FTOH-C13	13.216	1012	52183	0.0194	0.0192	ng
8:2 FTOH-C13	6:2 FTOH-C13	14.413	21209	52183	0.4064	1.1648	ng
8:2 FTOH	6:2 FTOH-C13	14.407	277	52183	0.0053	0.0191	ng
10:2 FTOH	6:2 FTOH-C13	15.472	60	52183	0.0012	0.0111	ng
12:2 FTOH	6:2 FTOH-C13	16.452	144	52183	0.0028	0.0073	ng
NMeFOSA	6:2 FTOH-C13	18.654	54	52183	0.0010	0.0037	ng
NEtFOSA	6:2 FTOH-C13	18.931	178	52183	0.0034	0.0028	ng

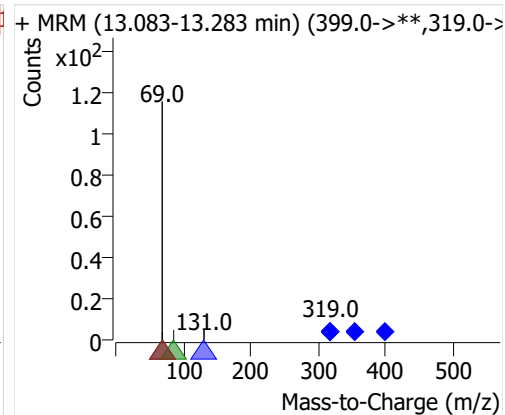
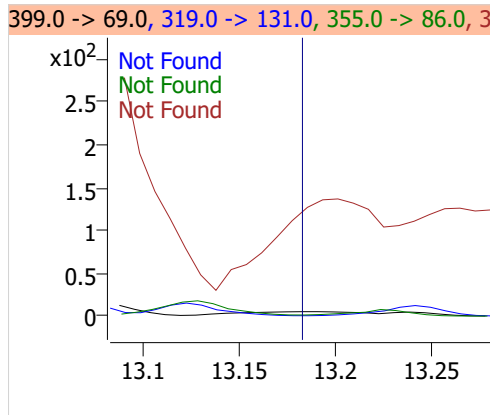
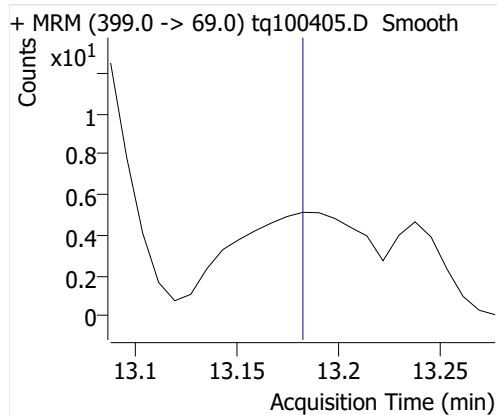
## 4:2 FTOH



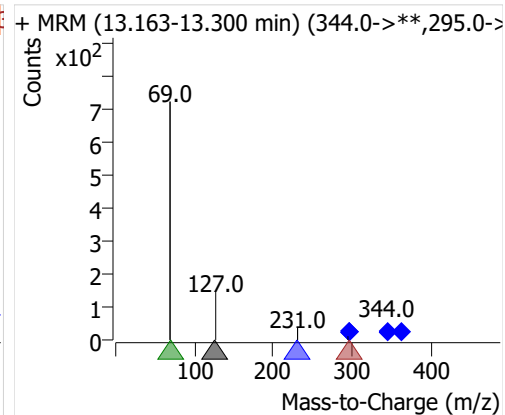
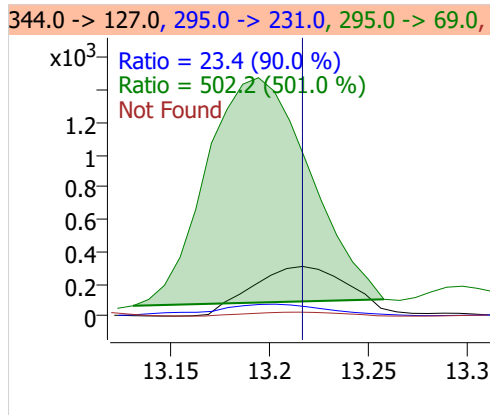
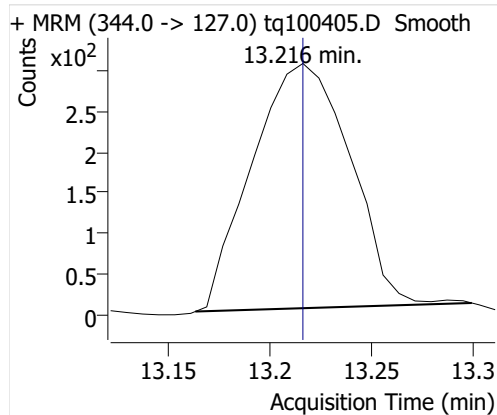
## 5:2sFTOH



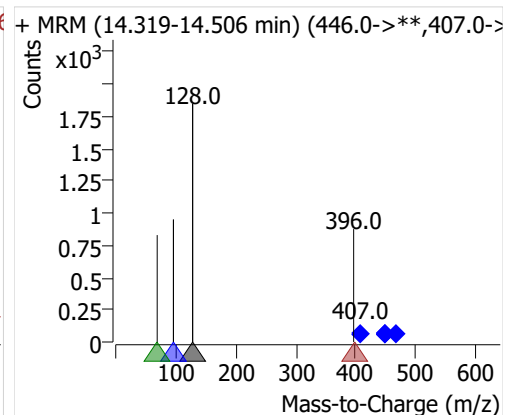
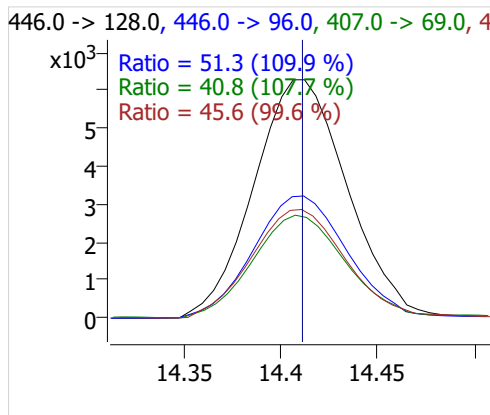
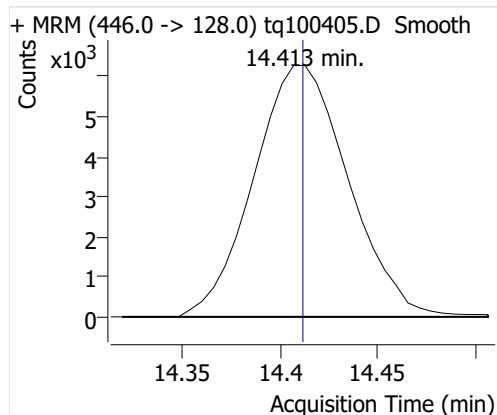
## 7:2sFTOH



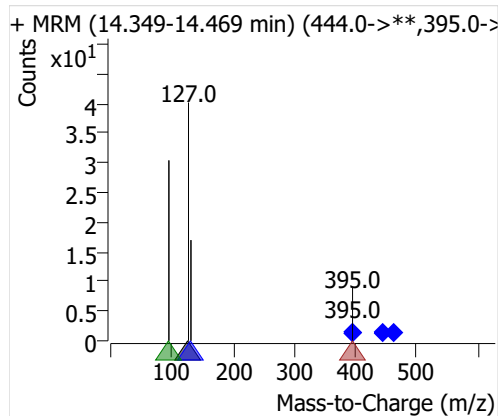
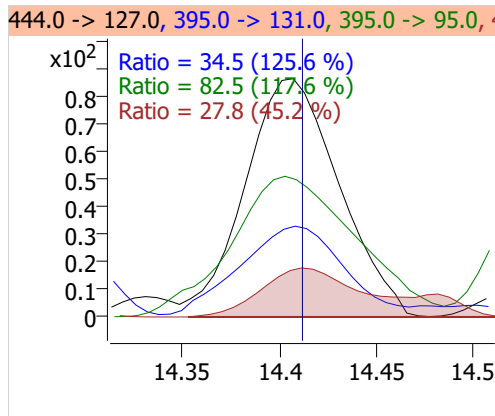
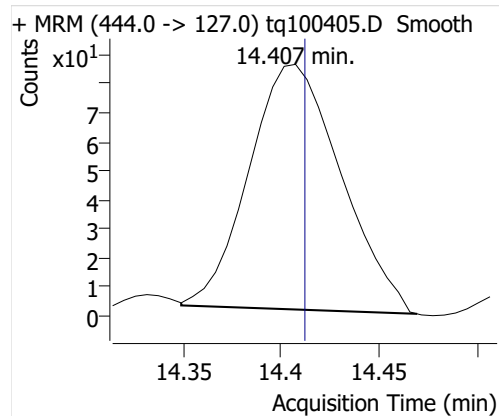
## 6:2 FTOH



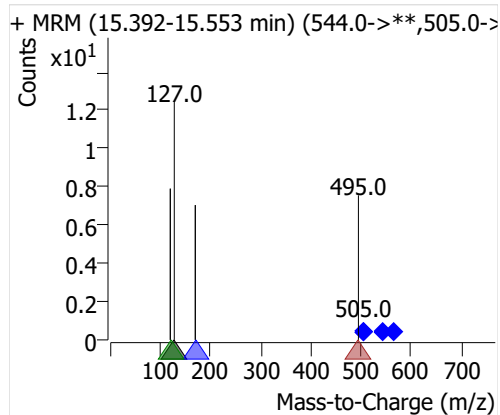
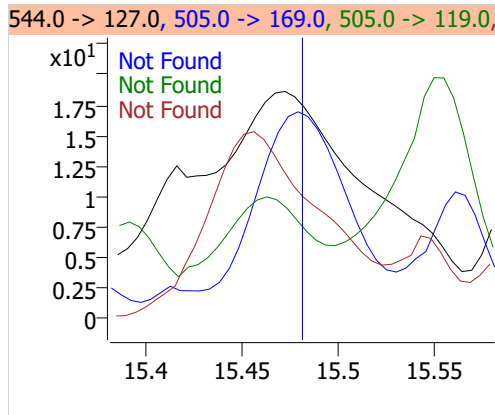
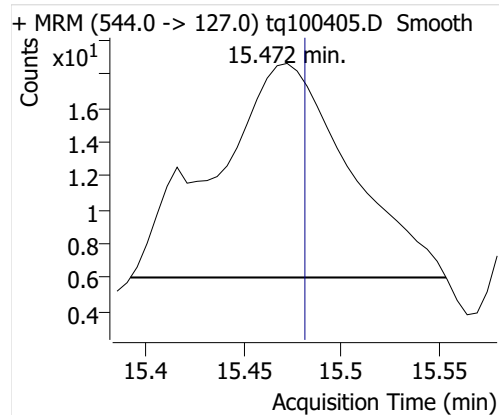
## 8:2 FTOH-C13



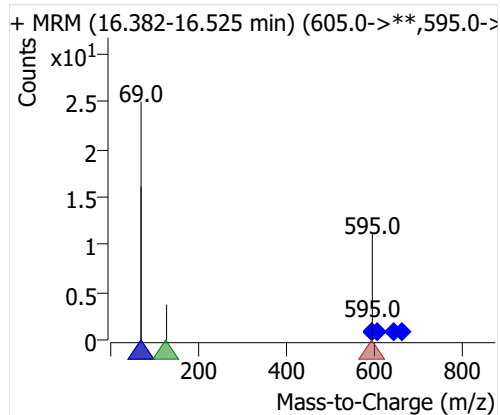
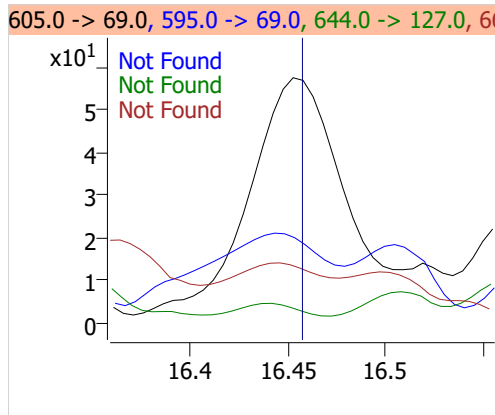
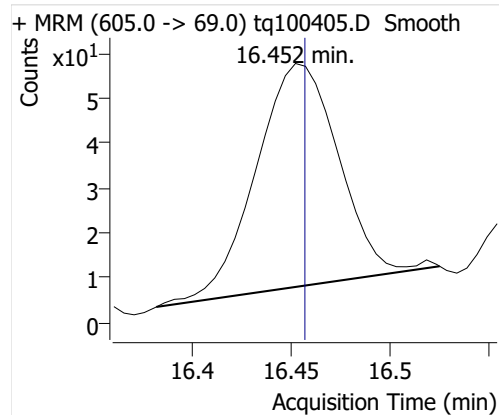
## 8:2 FTOH



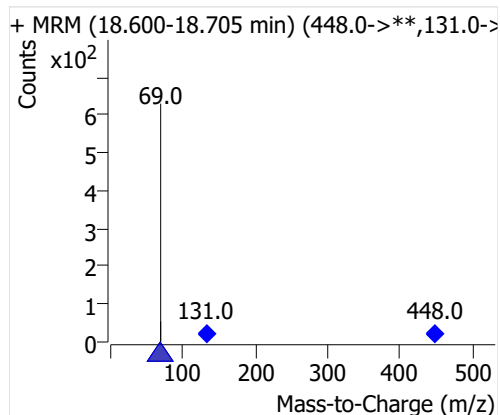
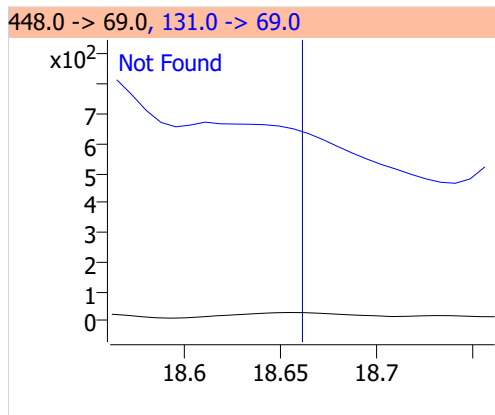
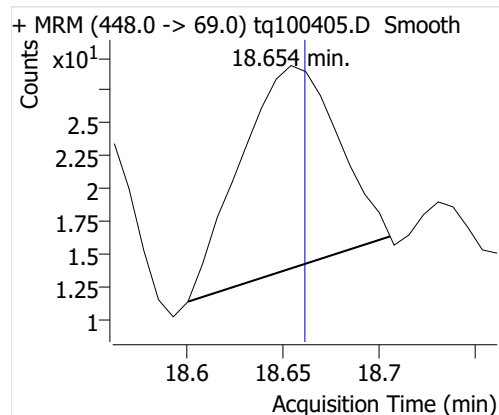
## 10:2 FTOH



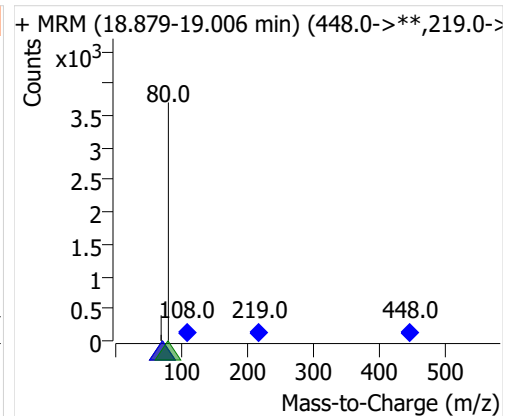
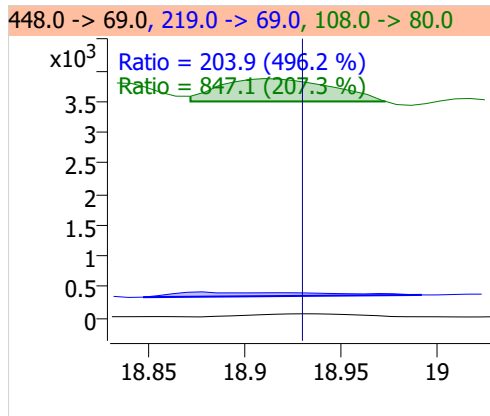
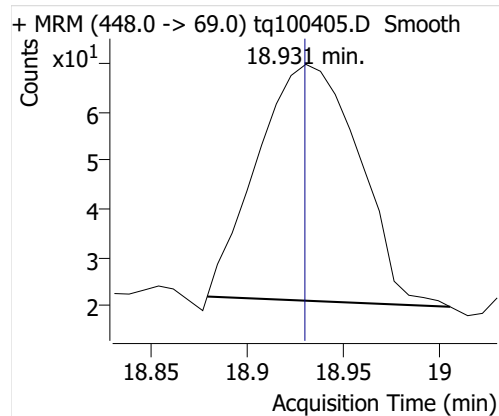
## 12:2 FTOH



## NMeFOSA



## NETFOSA

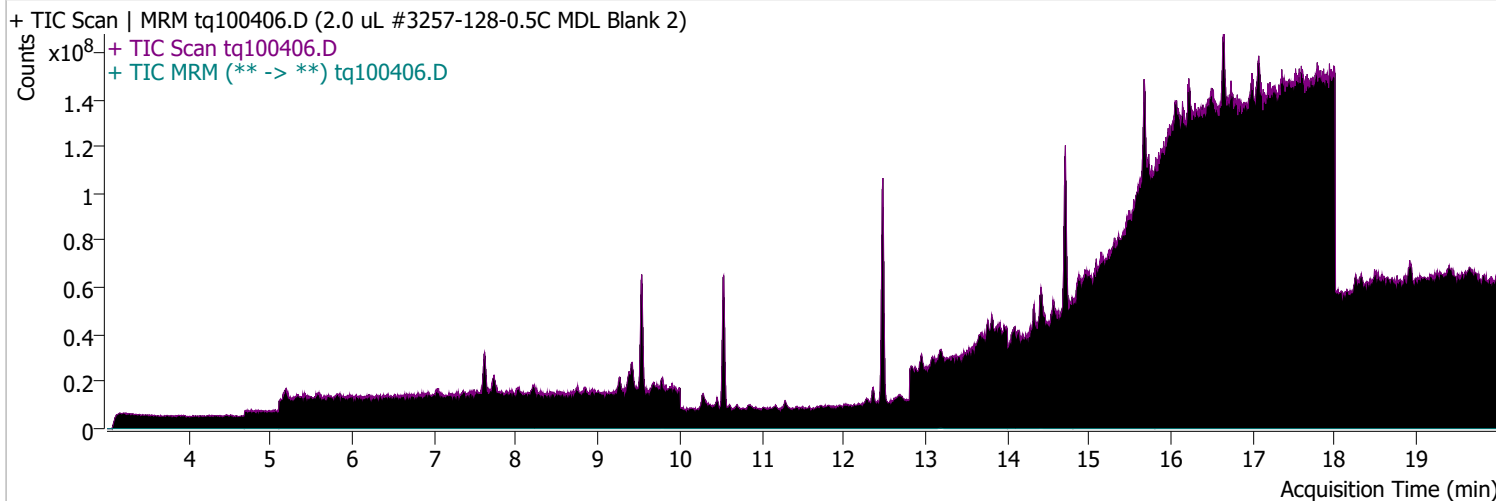




# Quantitative Analysis Sample Report

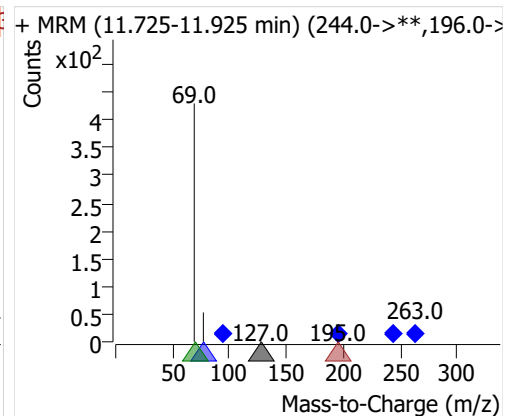
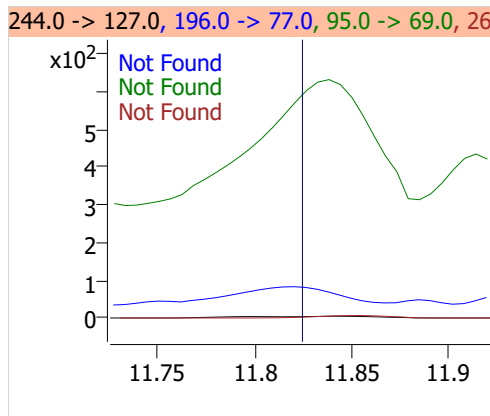
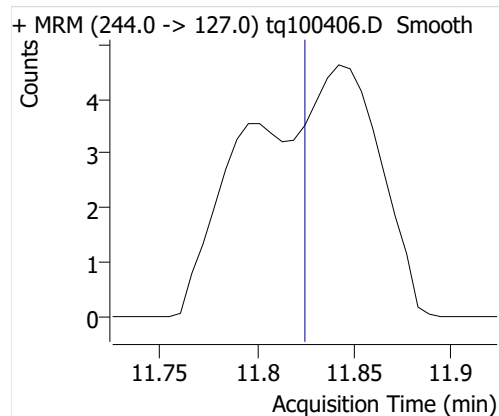
Batch Path	D:\MassHunter\GCMS\1\data\04OCT22\QuantResults\MDLMARKES.batch.bin		
Analysis Time	10/12/2022 1:21 PM	Analyst Name	ES-AREA1\US32_USR_INS22923
Report Time	10/20/2022 3:03:51 PM	Reporter Name	ES-AREA1\US32_USR_INS22923
Last Calib Update	10/3/2022 8:55 AM	Batch State	Processed
Quant Batch Version	10.1	Quant Report Version	10.1
Acq. Time	10/4/2022 11:56 AM	Data File	tq100406.D
Sample Type	Sample	Sample Name	2.0 uL #3257-128-0.5C MDL Blank 2
Dilution	1	Acq. Method	tq22m0930marks

## Sample Chromatogram

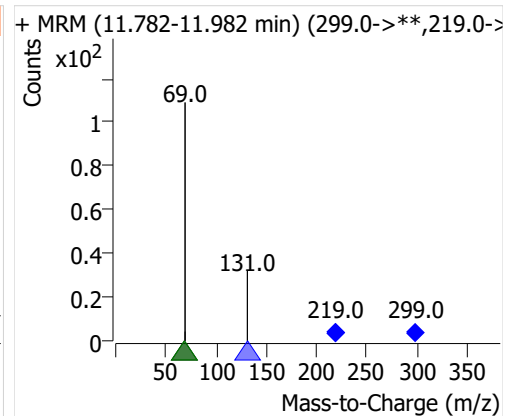
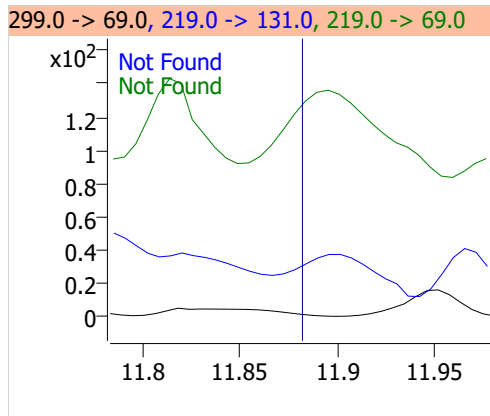
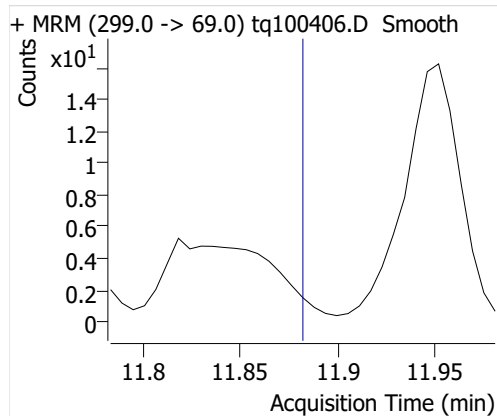


Compound	ISTD	RT	Resp.	ISTD Resp.	Resp. Ratio	Final Conc	Units
4:2 FTOH	6:2 FTOH-C13			53019		ND	ng
5:2sFTOH	6:2 FTOH-C13			53019		ND	ng
7:2sFTOH	6:2 FTOH-C13	13.183	46	53019	0.0009	0.0018	ng
6:2 FTOH	6:2 FTOH-C13	13.209	4015	53019	0.0757	0.0750	ng
8:2 FTOH-C13	6:2 FTOH-C13	14.412	20682	53019	0.3901	1.1179	ng
8:2 FTOH	6:2 FTOH-C13	14.407	212	53019	0.0040	0.0144	ng
10:2 FTOH	6:2 FTOH-C13	15.472	74	53019	0.0014	0.0133	ng
12:2 FTOH	6:2 FTOH-C13	16.453	226	53019	0.0043	0.0112	ng
NMeFOSA	6:2 FTOH-C13			53019		ND	ng
NEtFOSA	6:2 FTOH-C13	18.924	116	53019	0.0022	0.0018	ng

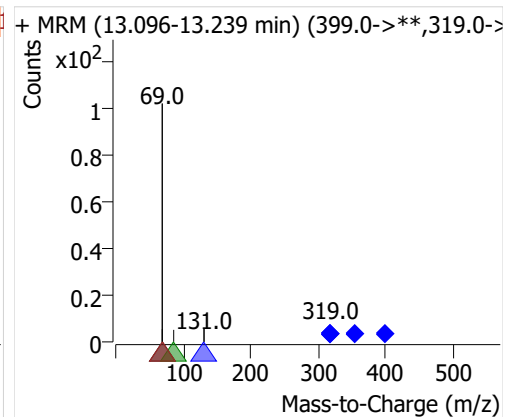
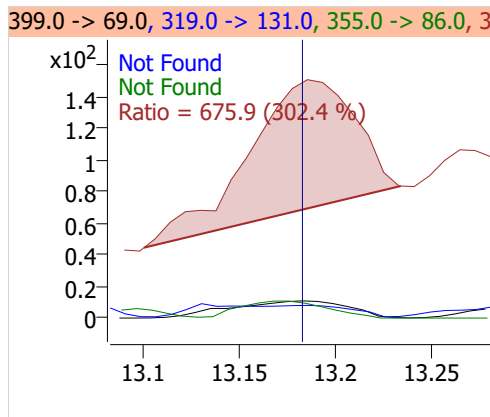
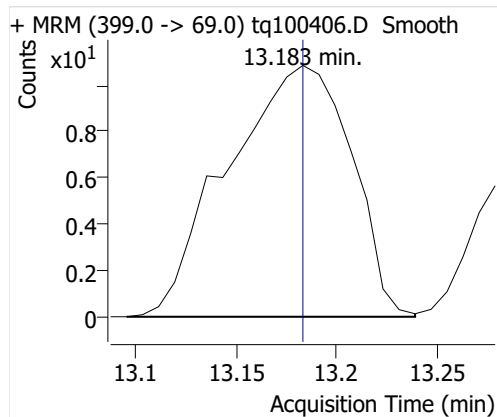
## 4:2 FTOH



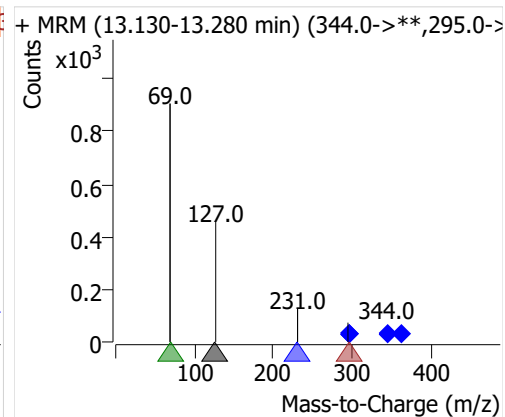
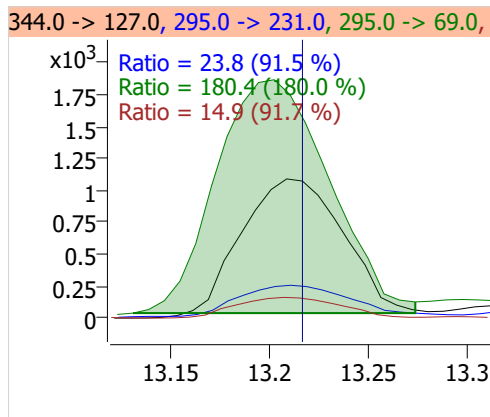
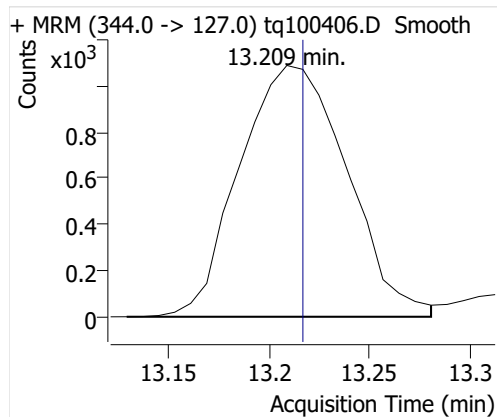
## 5:2sFTOH



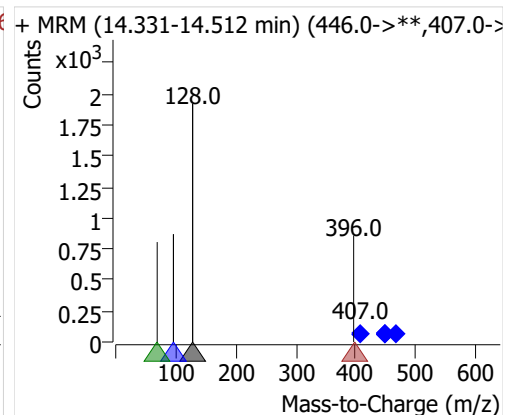
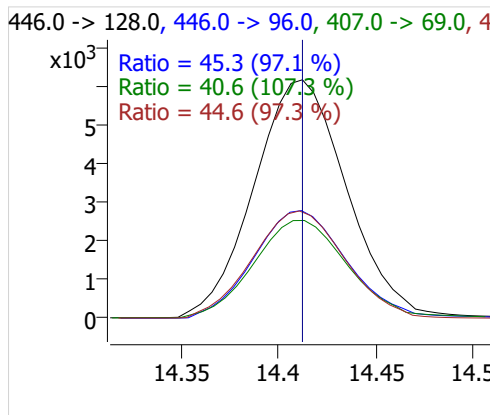
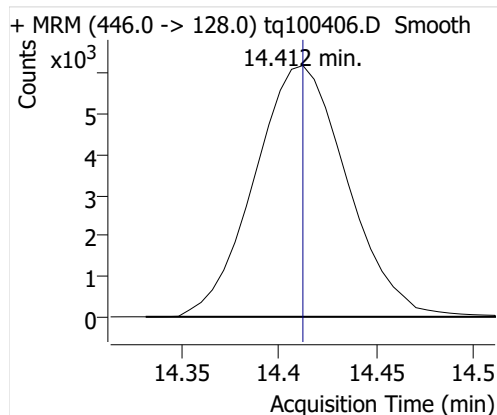
## 7:2sFTOH



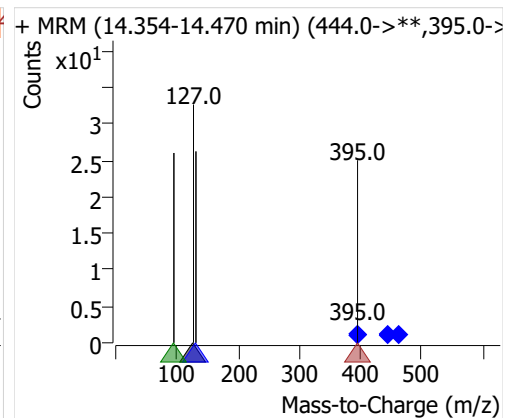
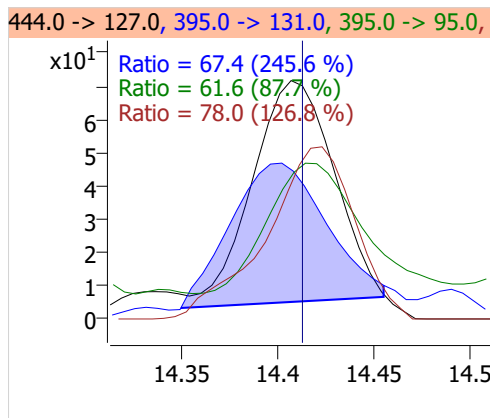
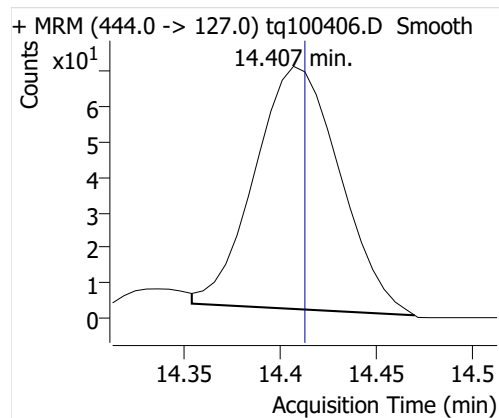
## 6:2 FTOH



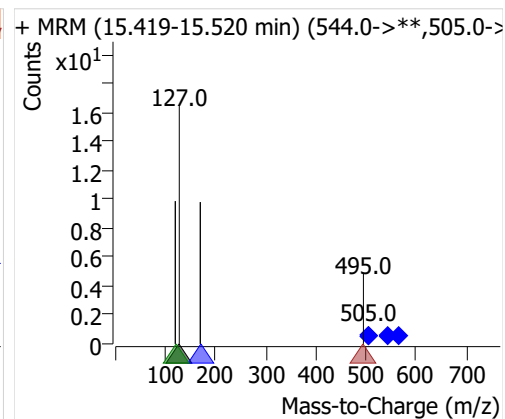
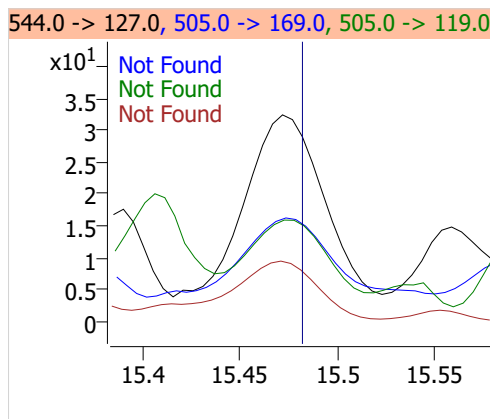
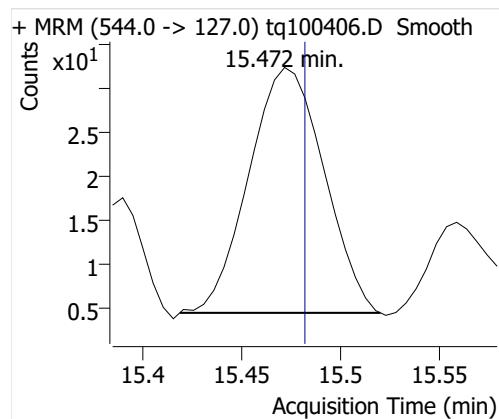
## 8:2 FTOH-C13



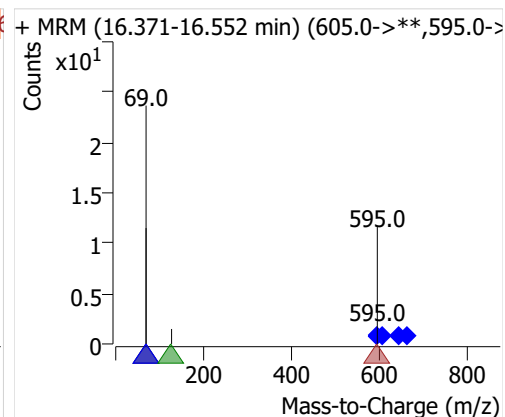
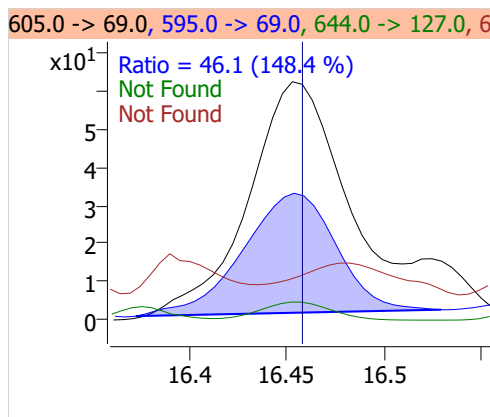
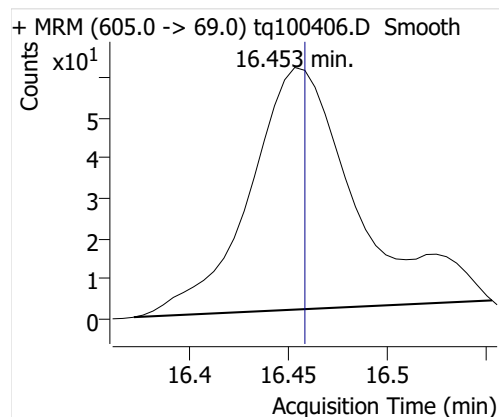
## 8:2 FTOH



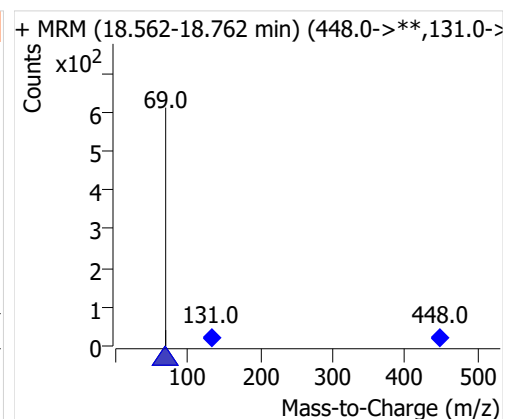
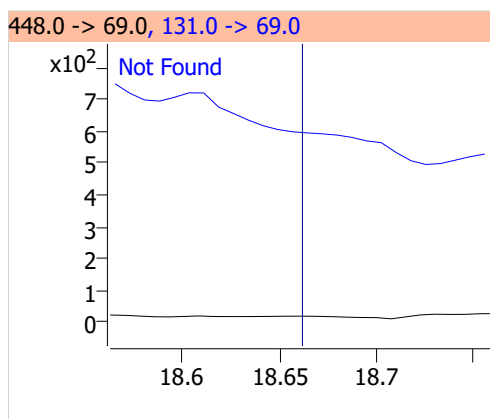
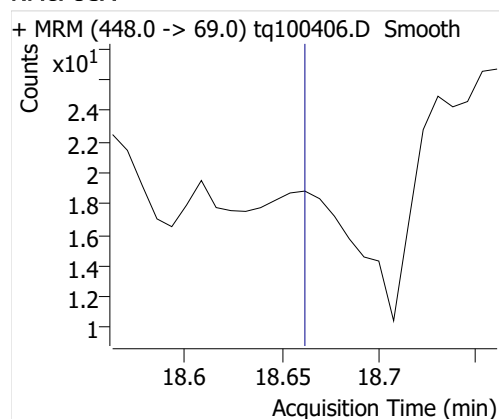
## 10:2 FTOH



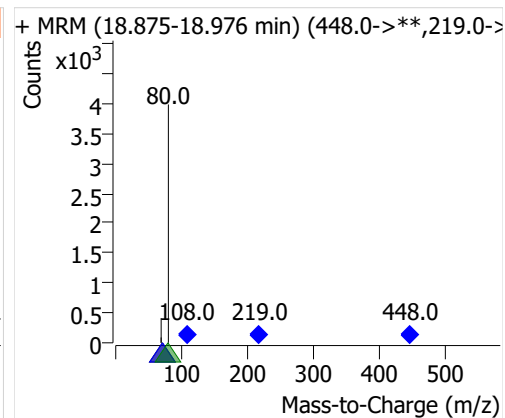
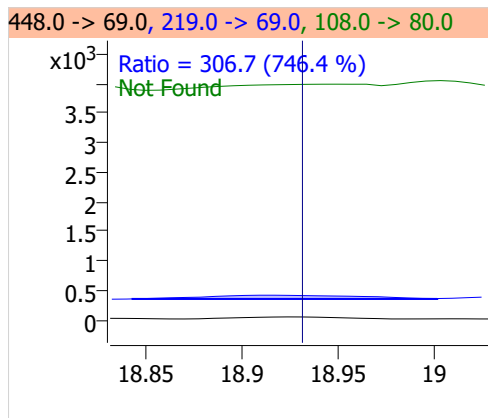
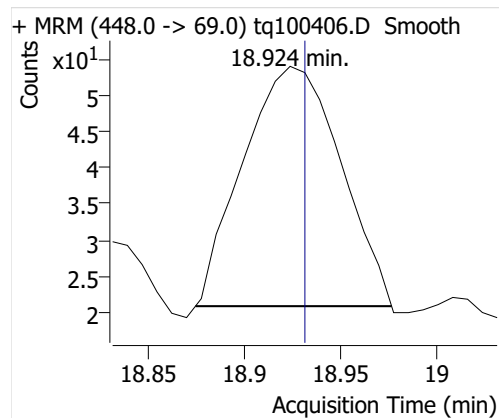
## 12:2 FTOH



## NMeFOSA



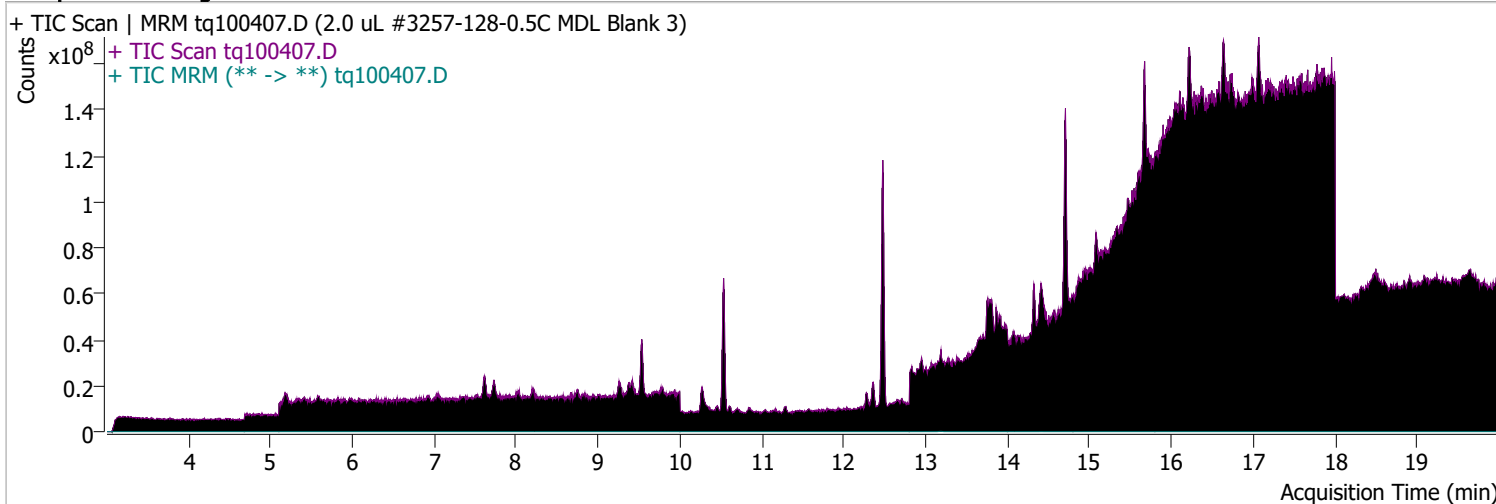
## NETFOSA



# Quantitative Analysis Sample Report

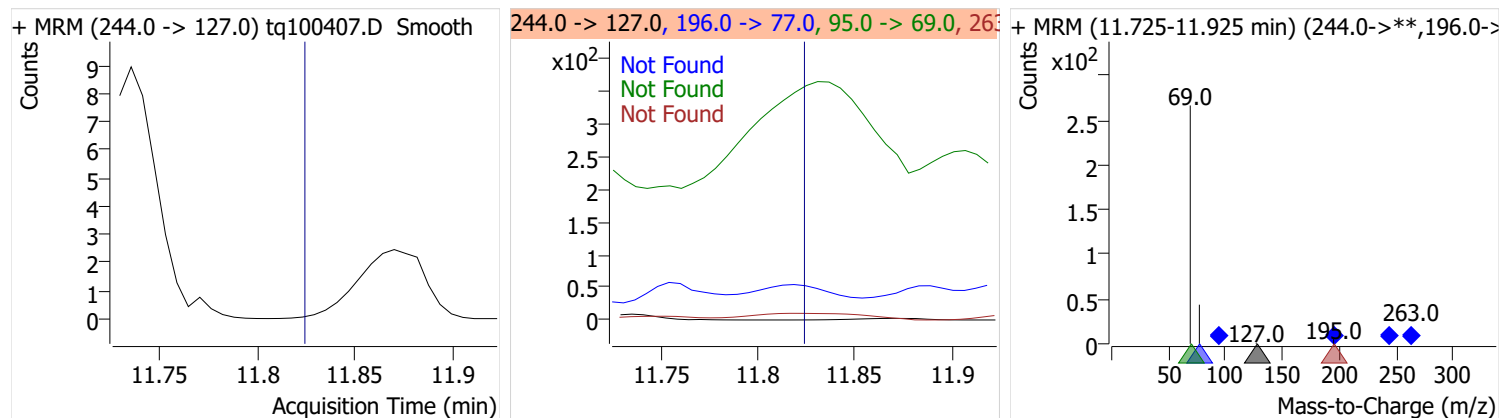
Batch Path	D:\MassHunter\GCMS\1\data\04OCT22\QuantResults\MDLMARKES.batch.bin		
Analysis Time	10/12/2022 1:21 PM	Analyst Name	ES-AREA1\US32_USR_INS22923
Report Time	10/20/2022 3:03:52 PM	Reporter Name	ES-AREA1\US32_USR_INS22923
Last Calib Update	10/3/2022 8:55 AM	Batch State	Processed
Quant Batch Version	10.1	Quant Report Version	10.1
Acq. Time	10/4/2022 12:20 PM	Data File	tq100407.D
Sample Type	Sample	Sample Name	2.0 uL #3257-128-0.5C MDL Blank 3
Dilution	1	Acq. Method	tq22m0930marks

## Sample Chromatogram

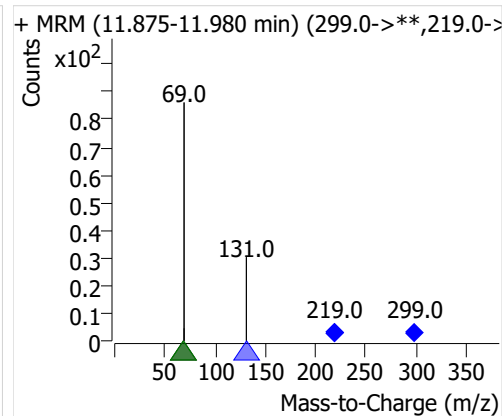
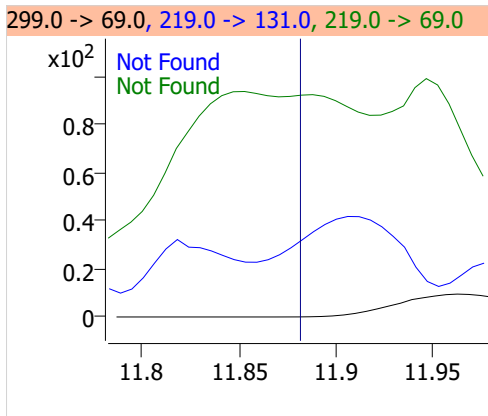
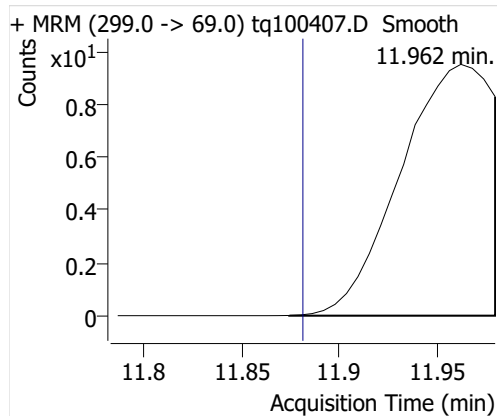


Compound	ISTD	RT	Resp.	ISTD Resp.	Resp. Ratio	Final Conc	Units
4:2 FTOH	6:2 FTOH-C13			52456		ND	ng
5:2sFTOH	6:2 FTOH-C13	11.962	30	52456	0.0006	0.0024	ng
7:2sFTOH	6:2 FTOH-C13			52456		ND	ng
6:2 FTOH	6:2 FTOH-C13	13.216	2010	52456	0.0383	0.0380	ng
8:2 FTOH-C13	6:2 FTOH-C13	14.413	20686	52456	0.3944	1.1302	ng
8:2 FTOH	6:2 FTOH-C13	14.401	51	52456	0.0010	0.0035	ng
10:2 FTOH	6:2 FTOH-C13			52456		ND	ng
12:2 FTOH	6:2 FTOH-C13	16.447	39	52456	0.0008	0.0020	ng
NMeFOSA	6:2 FTOH-C13	18.662	102	52456	0.0019	0.0069	ng
NetFOSA	6:2 FTOH-C13	18.931	129	52456	0.0025	0.0020	ng

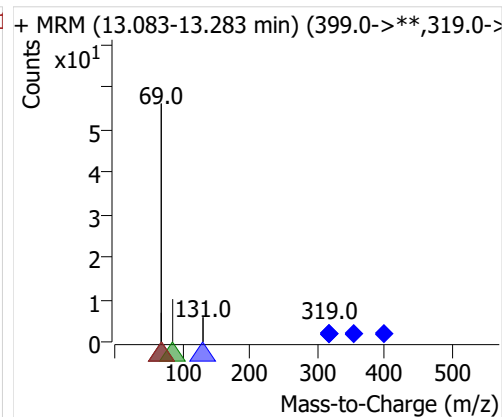
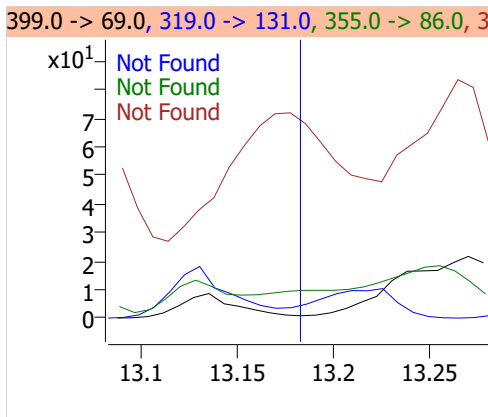
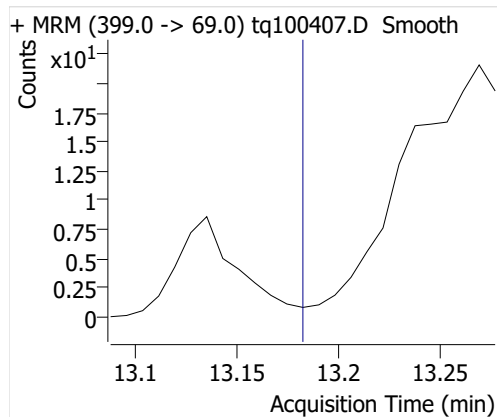
## 4:2 FTOH



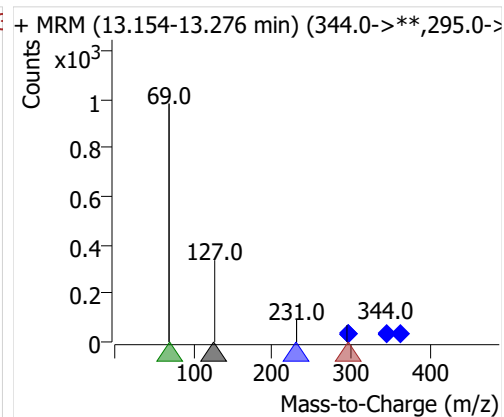
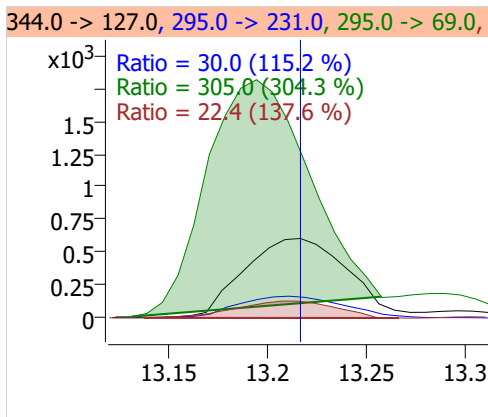
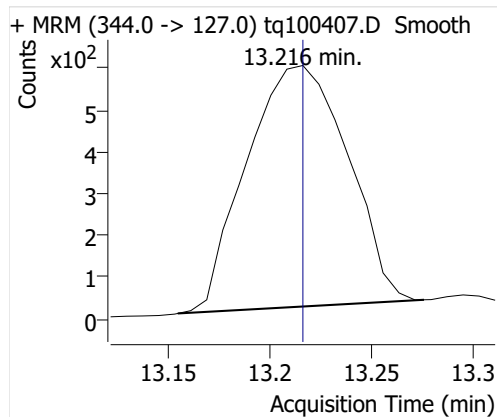
## 5:2sFTOH



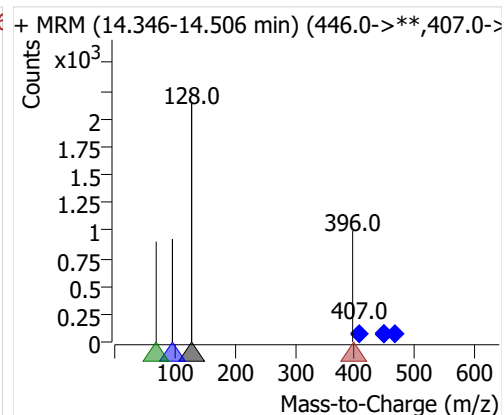
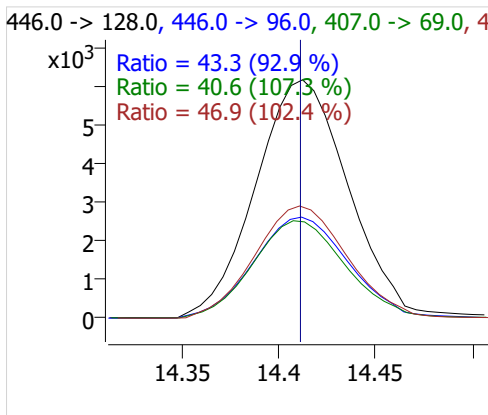
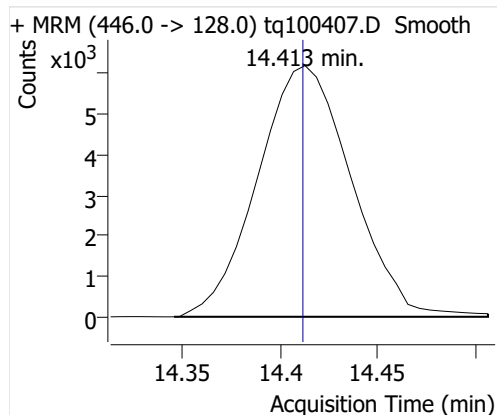
## 7:2sFTOH



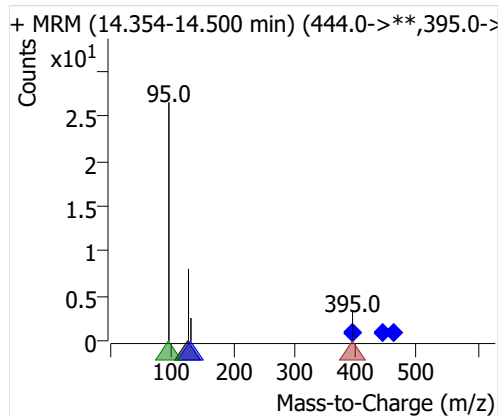
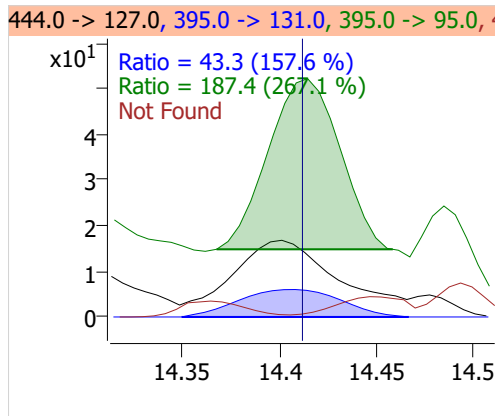
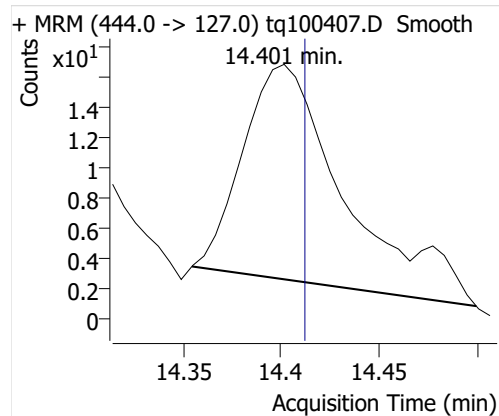
## 6:2 FTOH



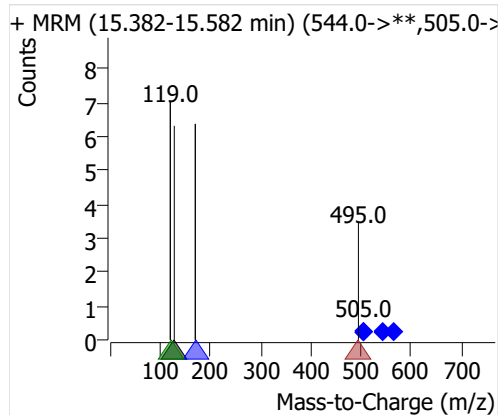
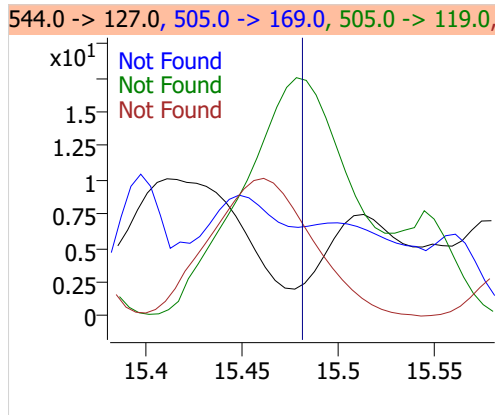
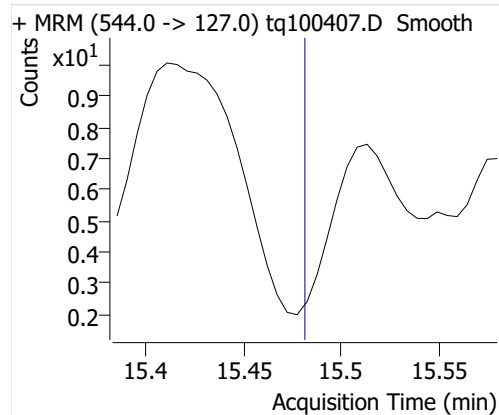
## 8:2 FTOH-C13



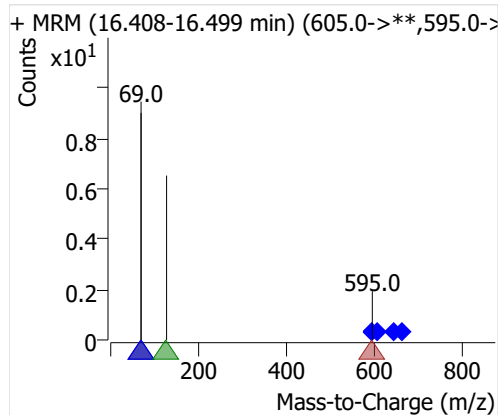
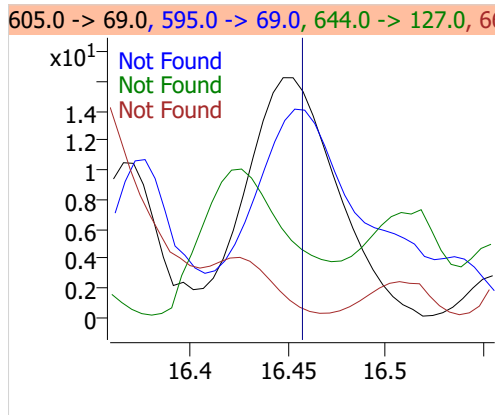
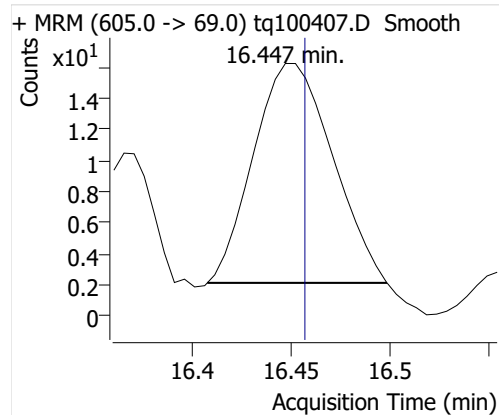
## 8:2 FTOH



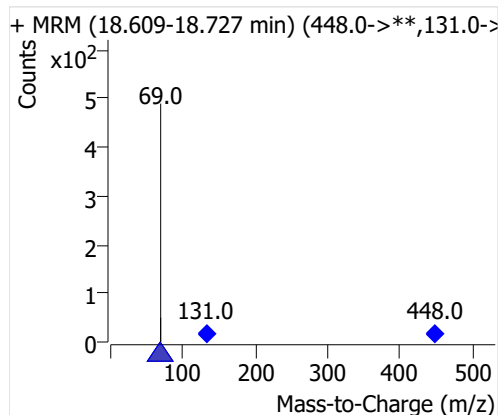
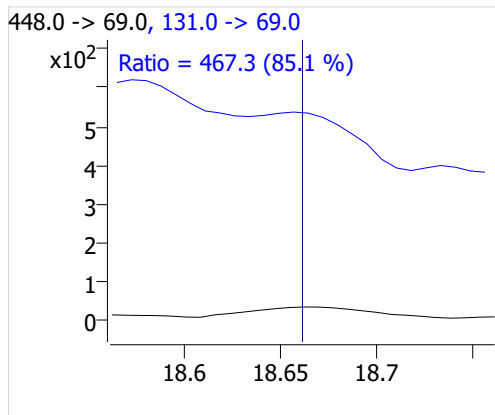
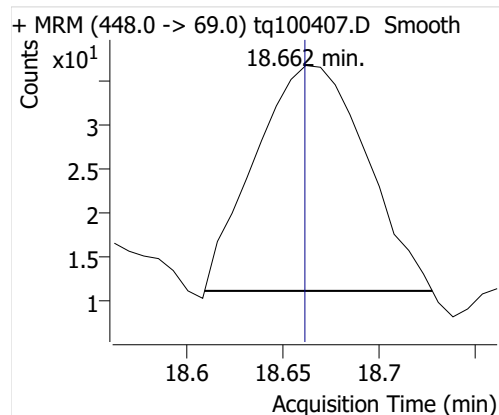
## 10:2 FTOH



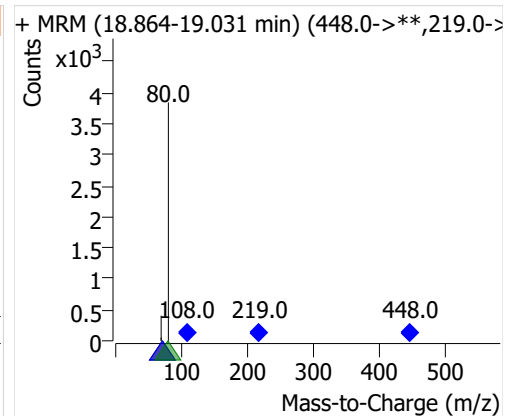
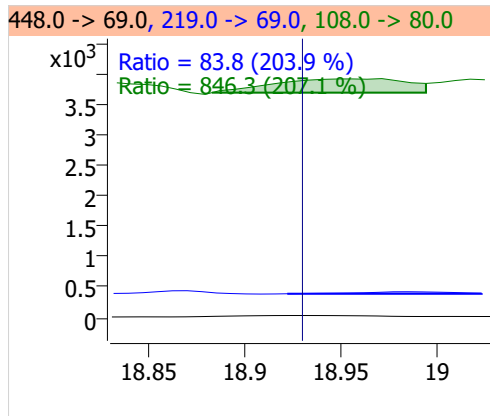
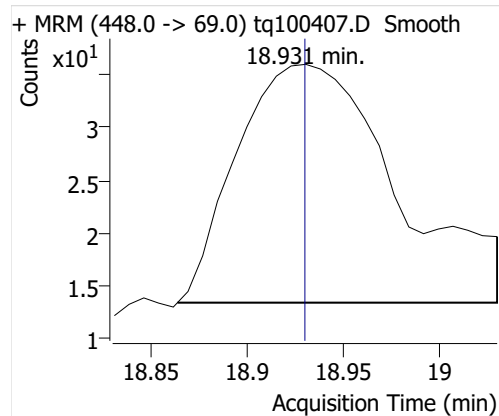
## 12:2 FTOH



## NMeFOSA



## NETFOSA

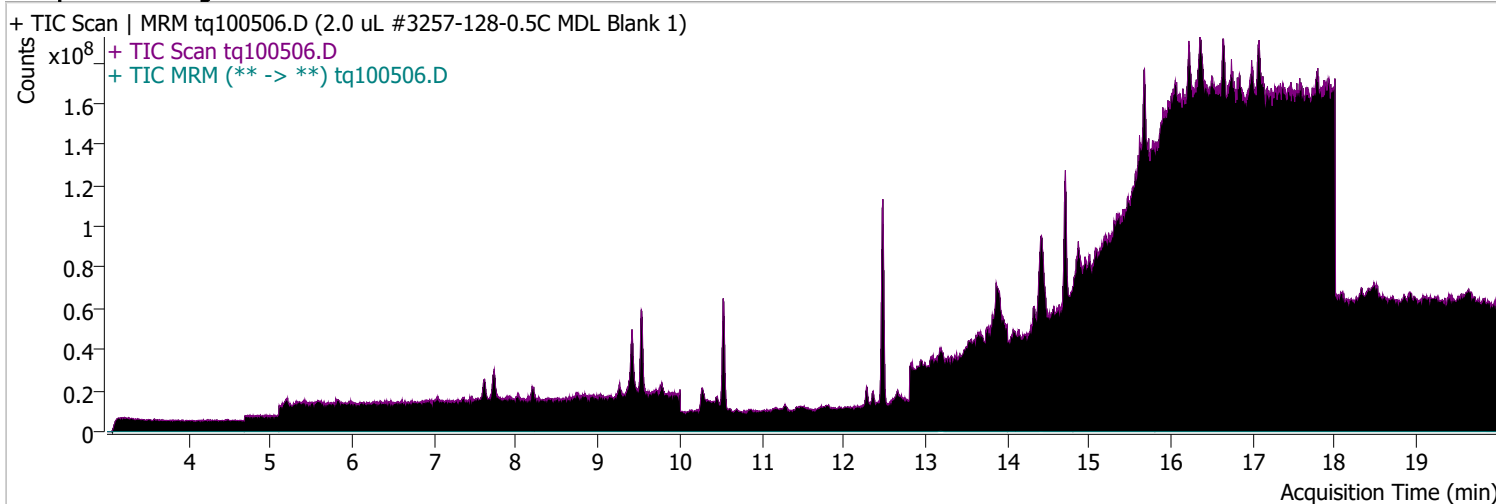




# Quantitative Analysis Sample Report

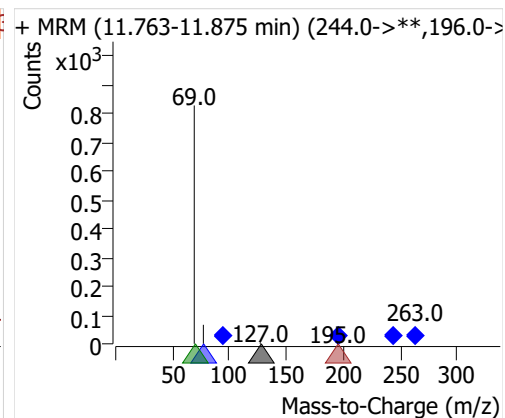
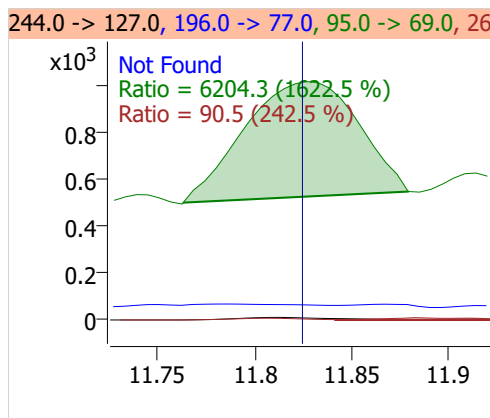
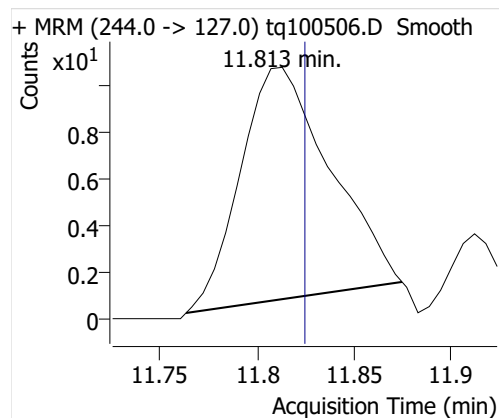
Batch Path	D:\MassHunter\GCMS\1\data\04OCT22\QuantResults\MDLMARKES.batch.bin		
Analysis Time	10/12/2022 1:21 PM	Analyst Name	ES-AREA1\US32_USR_INS22923
Report Time	10/20/2022 3:03:53 PM	Reporter Name	ES-AREA1\US32_USR_INS22923
Last Calib Update	10/3/2022 8:55 AM	Batch State	Processed
Quant Batch Version	10.1	Quant Report Version	10.1
Acq. Time	10/5/2022 12:00 PM	Data File	tq100506.D
Sample Type	Sample	Sample Name	2.0 uL #3257-128-0.5C MDL Blank 1
Dilution	1	Acq. Method	tq22m0930marks

## Sample Chromatogram

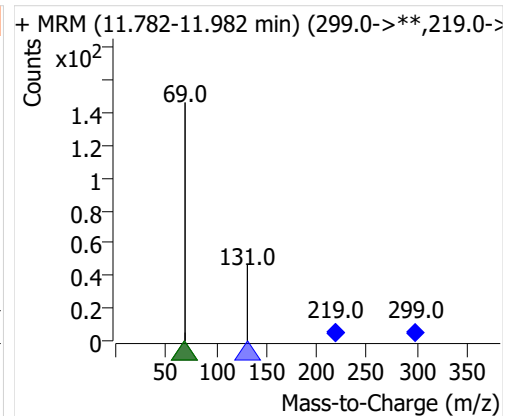
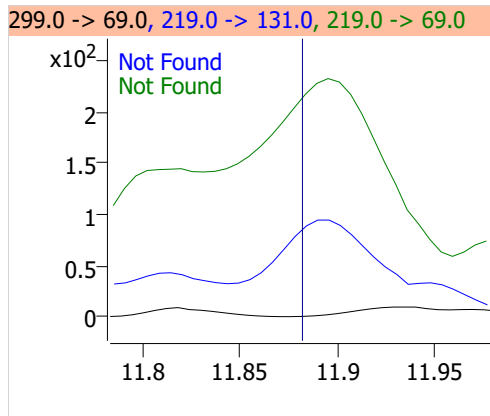
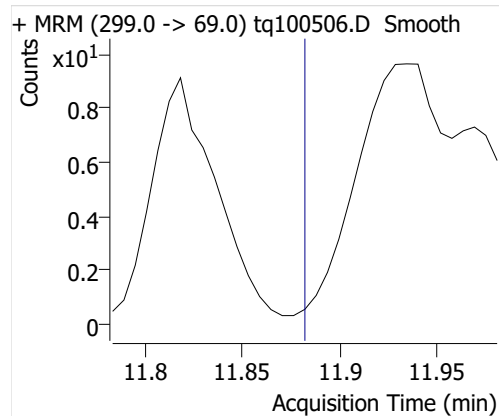


Compound	ISTD	RT	Resp.	ISTD Resp.	Resp. Ratio	Final Conc	Units
4:2 FTOH	6:2 FTOH-C13	11.813	32	51988	0.0006	0.0011	ng
5:2sFTOH	6:2 FTOH-C13			51988		ND	ng
7:2sFTOH	6:2 FTOH-C13			51988		ND	ng
6:2 FTOH	6:2 FTOH-C13	13.209	820	51988	0.0158	0.0156	ng
8:2 FTOH-C13	6:2 FTOH-C13	14.412	23630	51988	0.4545	1.3026	ng
8:2 FTOH	6:2 FTOH-C13	14.407	94	51988	0.0018	0.0065	ng
10:2 FTOH	6:2 FTOH-C13	15.472	107	51988	0.0021	0.0197	ng
12:2 FTOH	6:2 FTOH-C13	16.458	181	51988	0.0035	0.0092	ng
NMeFOSA	6:2 FTOH-C13	18.647	111	51988	0.0021	0.0076	ng
NetFOSA	6:2 FTOH-C13	18.931	327	51988	0.0063	0.0051	ng

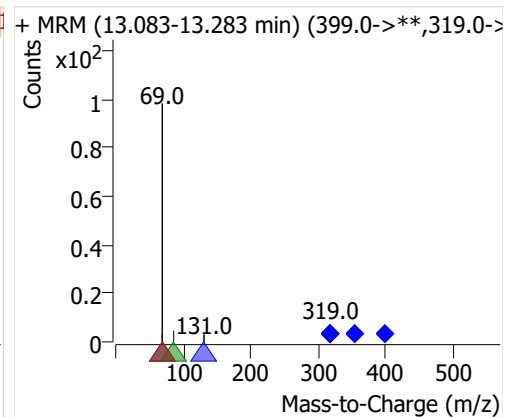
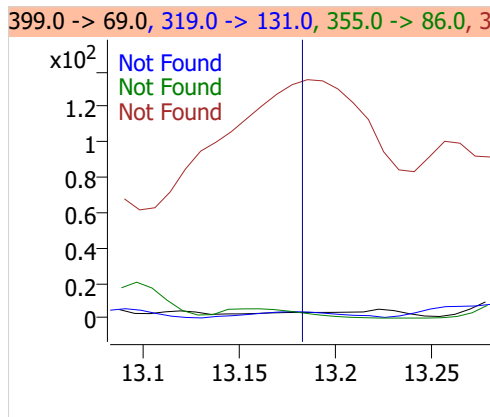
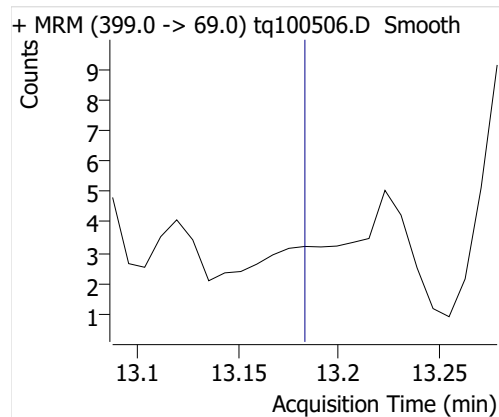
## 4:2 FTOH



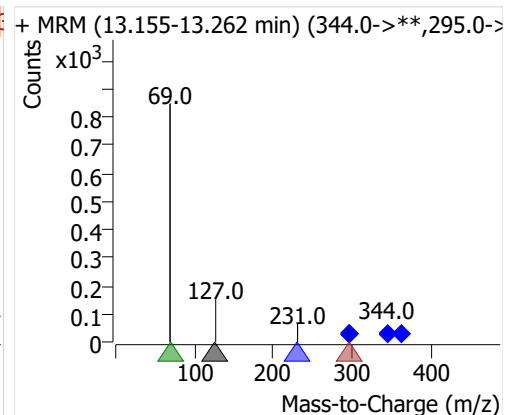
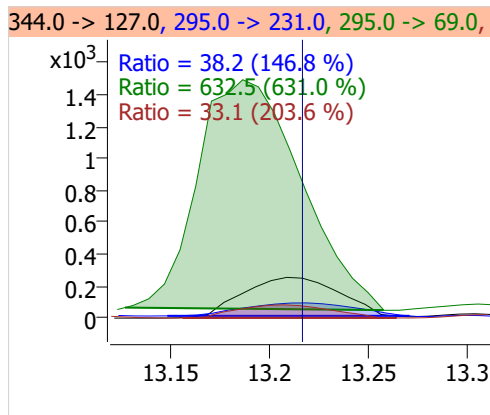
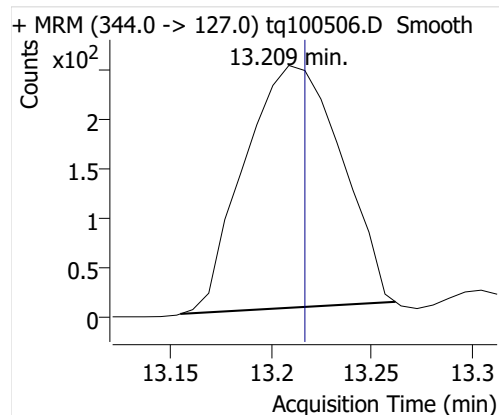
## 5:2sFTOH



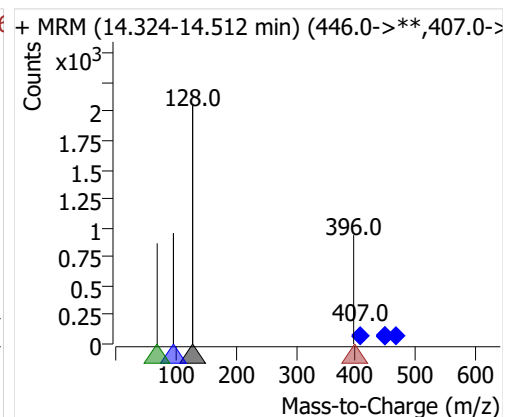
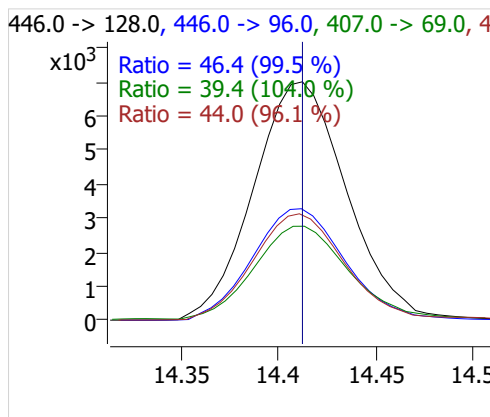
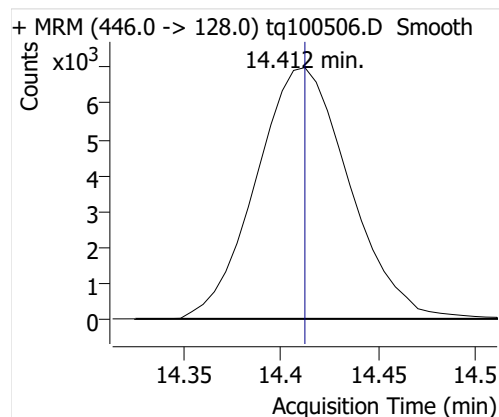
## 7:2sFTOH



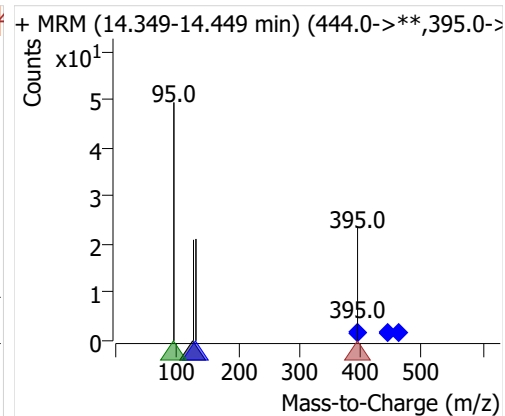
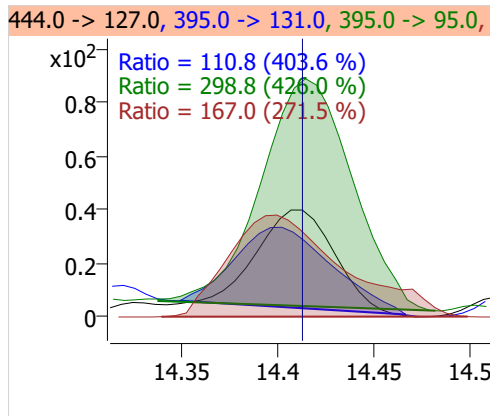
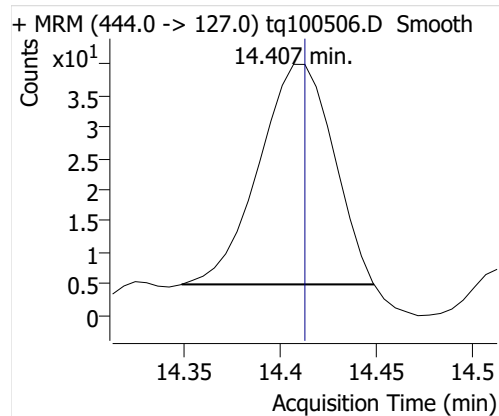
## 6:2 FTOH



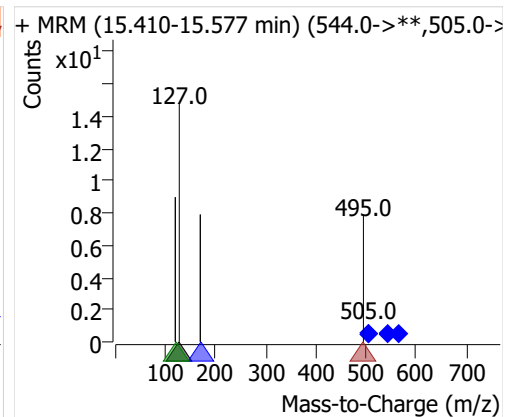
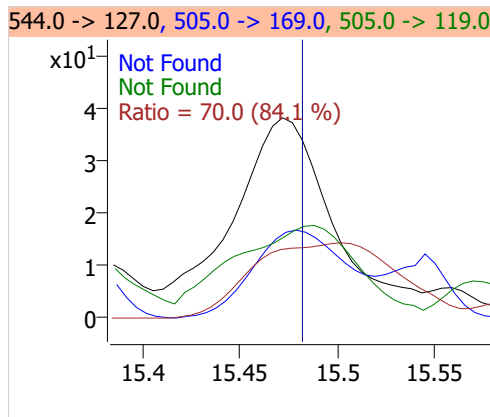
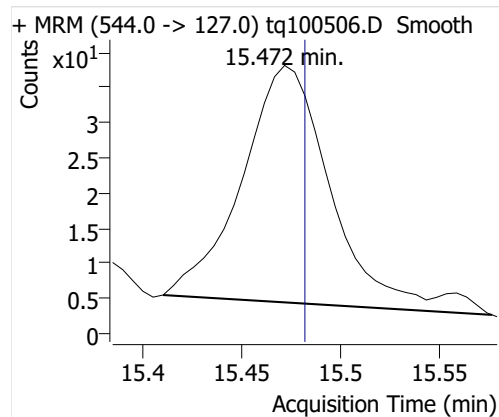
## 8:2 FTOH-C13



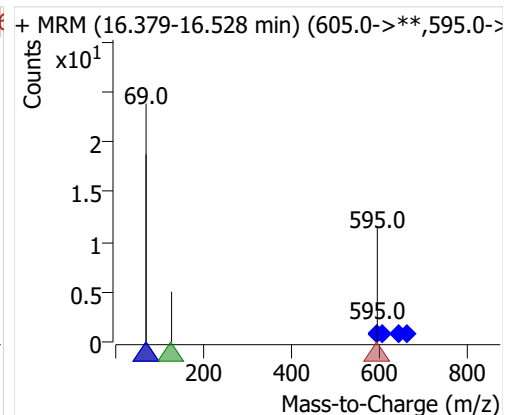
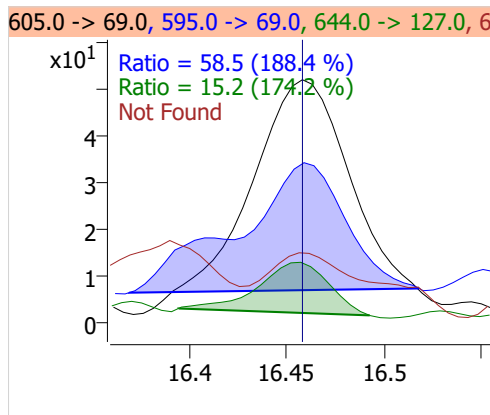
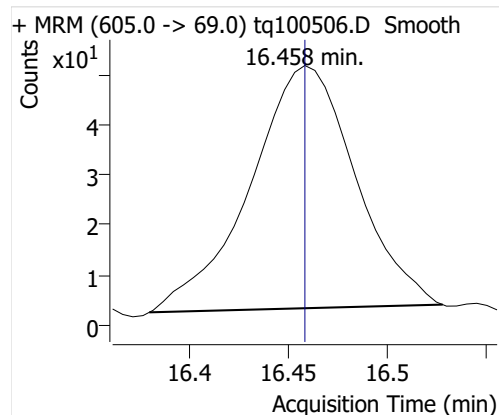
## 8:2 FTOH



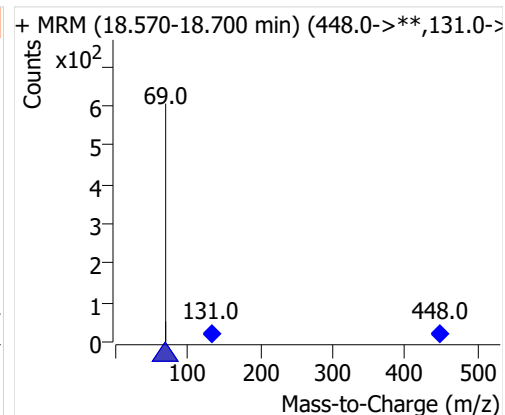
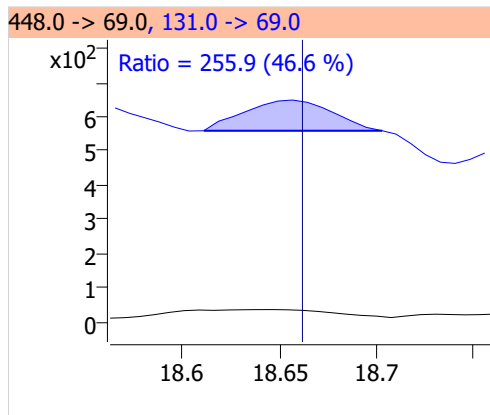
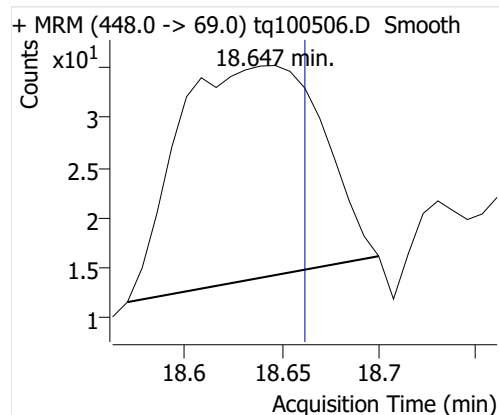
## 10:2 FTOH



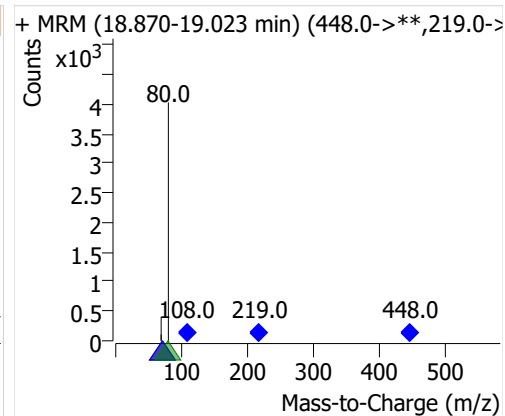
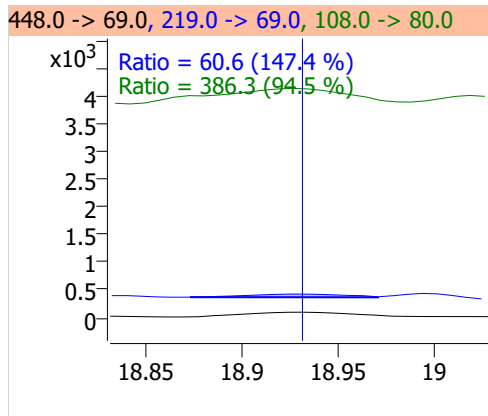
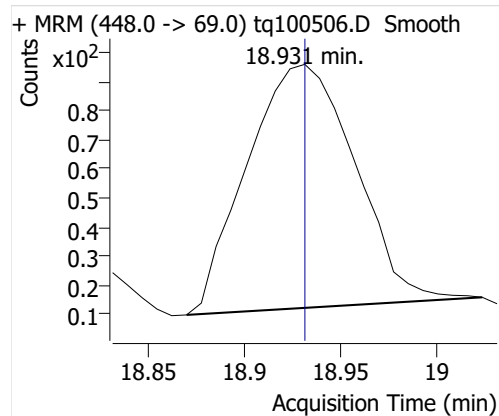
## 12:2 FTOH



## NMeFOSA



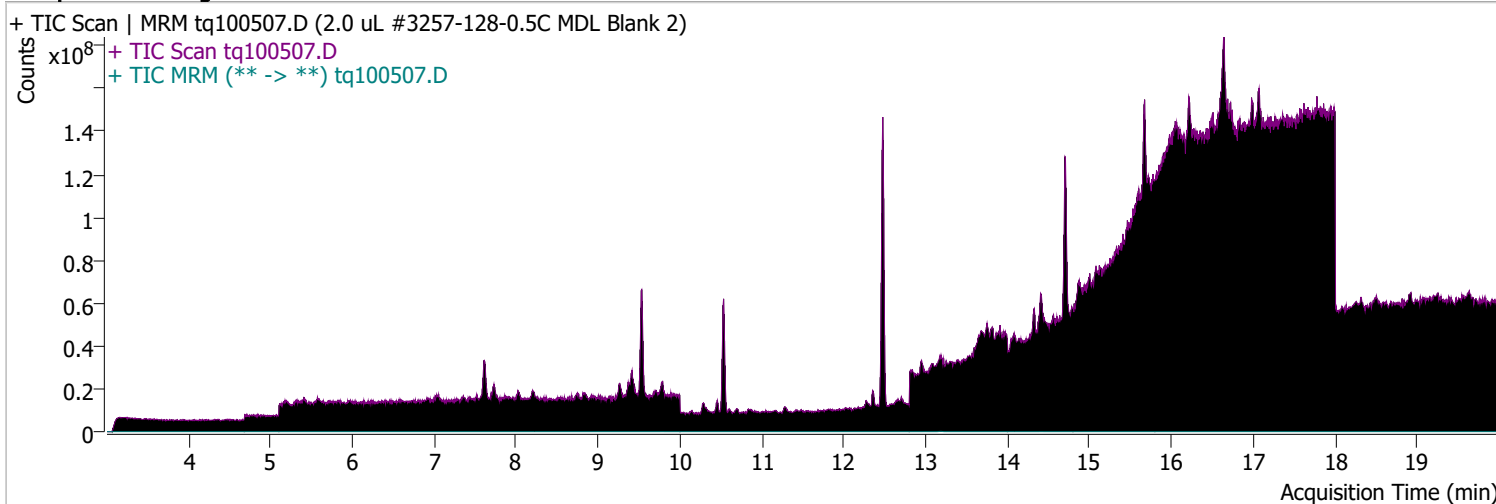
## NetFOSA



# Quantitative Analysis Sample Report

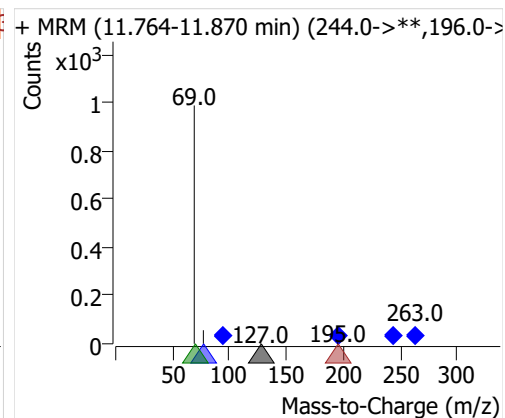
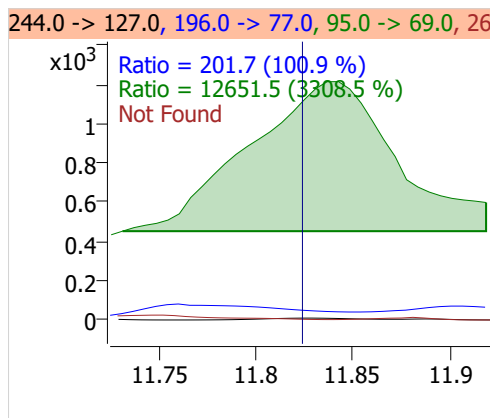
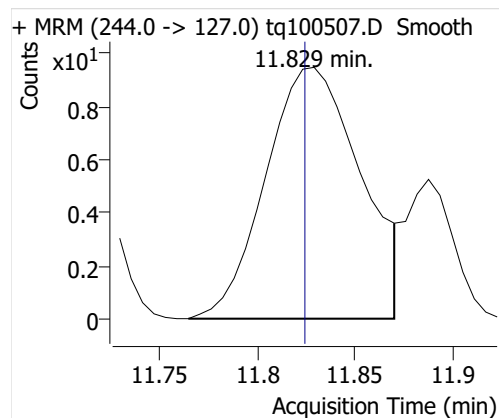
Batch Path	D:\MassHunter\GCMS\1\data\04OCT22\QuantResults\MDLMARKES.batch.bin		
Analysis Time	10/12/2022 1:21 PM	Analyst Name	ES-AREA1\US32_USR_INS22923
Report Time	10/20/2022 3:03:54 PM	Reporter Name	ES-AREA1\US32_USR_INS22923
Last Calib Update	10/3/2022 8:55 AM	Batch State	Processed
Quant Batch Version	10.1	Quant Report Version	10.1
Acq. Time	10/5/2022 12:24 PM	Data File	tq100507.D
Sample Type	Sample	Sample Name	2.0 uL #3257-128-0.5C MDL Blank 2
Dilution	1	Acq. Method	tq22m0930marks

## Sample Chromatogram



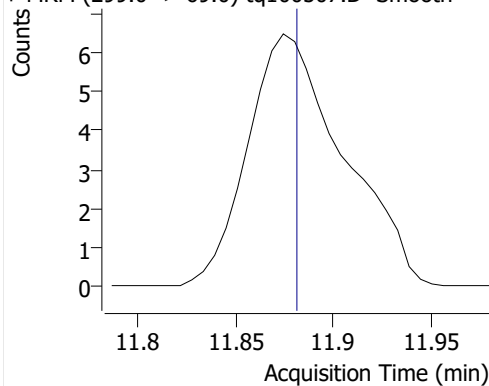
Compound	ISTD	RT	Resp.	ISTD Resp.	Resp. Ratio	Final Conc	Units
4:2 FTOH	6:2 FTOH-C13	11.829	31	47605	0.0007	0.0012	ng
5:2sFTOH	6:2 FTOH-C13			47605		ND	ng
7:2sFTOH	6:2 FTOH-C13			47605		ND	ng
6:2 FTOH	6:2 FTOH-C13	13.208	3403	47605	0.0715	0.0708	ng
8:2 FTOH-C13	6:2 FTOH-C13	14.413	21233	47605	0.4460	1.2782	ng
8:2 FTOH	6:2 FTOH-C13	14.413	112	47605	0.0023	0.0084	ng
10:2 FTOH	6:2 FTOH-C13			47605		ND	ng
12:2 FTOH	6:2 FTOH-C13	16.452	97	47605	0.0020	0.0054	ng
NMeFOSA	6:2 FTOH-C13			47605		ND	ng
NetFOSA	6:2 FTOH-C13	18.931	204	47605	0.0043	0.0035	ng

## 4:2 FTOH

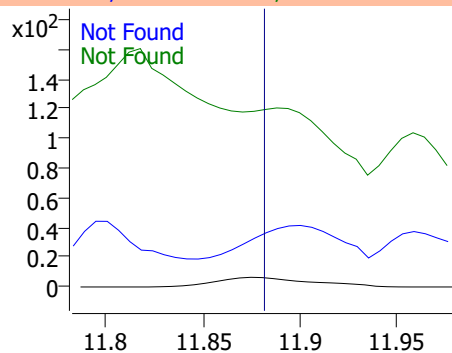


## 5:2sFTOH

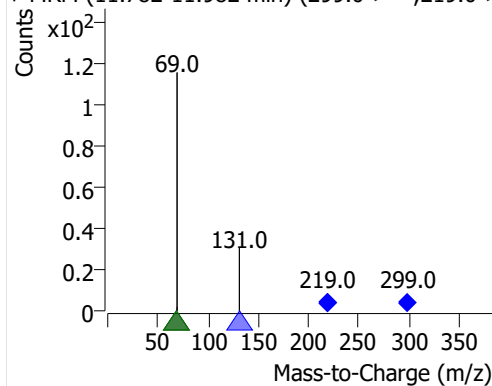
+ MRM (299.0 -&gt; 69.0) tq100507.D Smooth



299.0 -&gt; 69.0, 219.0 -&gt; 131.0, 219.0 -&gt; 69.0

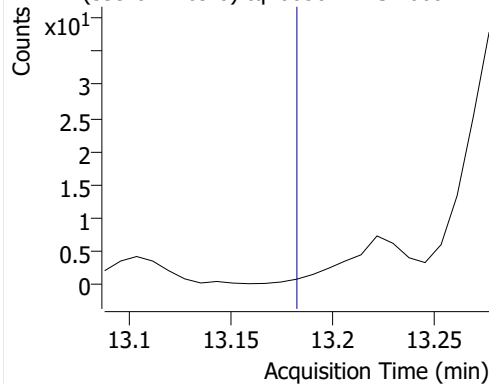


+ MRM (11.782-11.982 min) (299.0-&gt;\*\*,219.0-&gt;

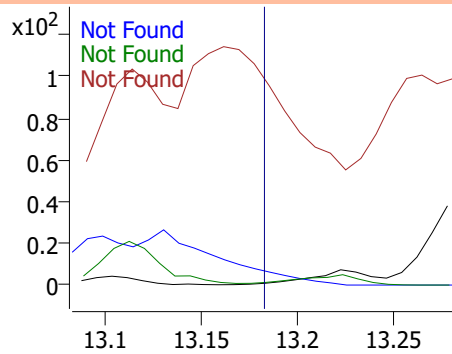


## 7:2sFTOH

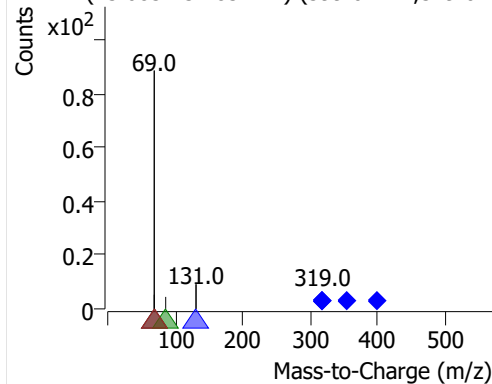
+ MRM (399.0 -&gt; 69.0) tq100507.D Smooth



399.0 -&gt; 69.0, 319.0 -&gt; 131.0, 355.0 -&gt; 86.0, 3

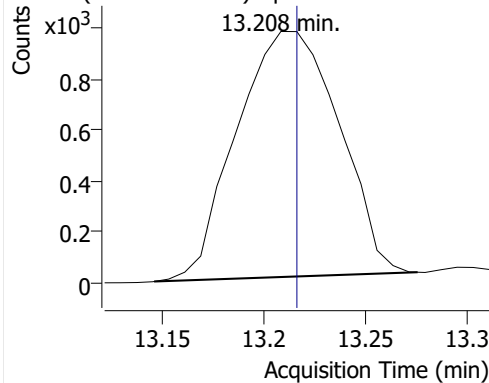


+ MRM (13.083-13.283 min) (399.0-&gt;\*\*,319.0-&gt;

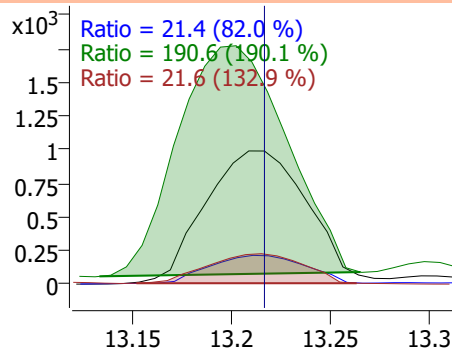


## 6:2 FTOH

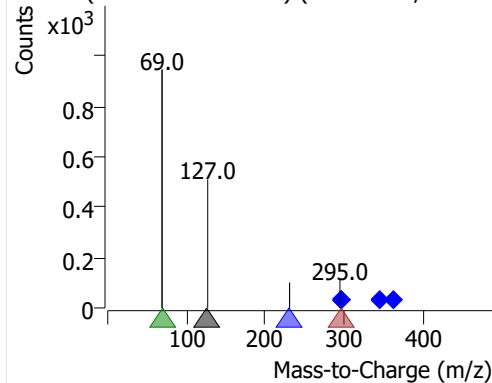
+ MRM (344.0 -&gt; 127.0) tq100507.D Smooth



344.0 -&gt; 127.0, 295.0 -&gt; 231.0, 295.0 -&gt; 69.0, 3

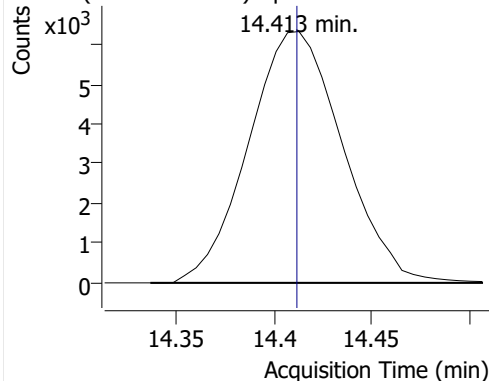


+ MRM (13.146-13.276 min) (344.0-&gt;\*\*,295.0-&gt;

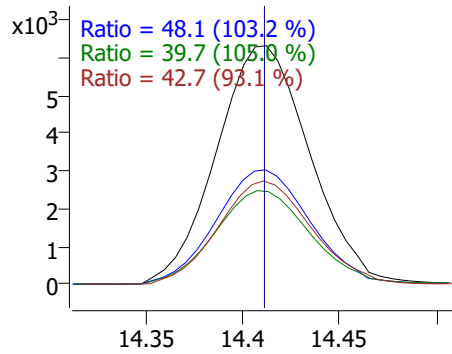


## 8:2 FTOH-C13

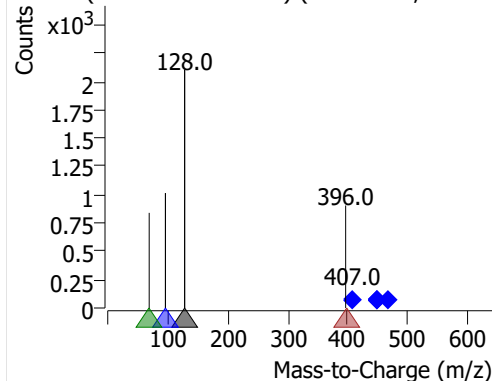
+ MRM (446.0 -&gt; 128.0) tq100507.D Smooth



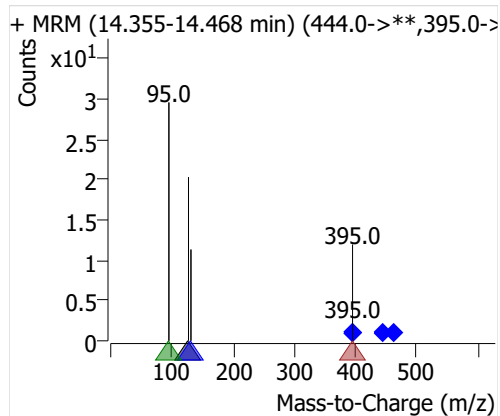
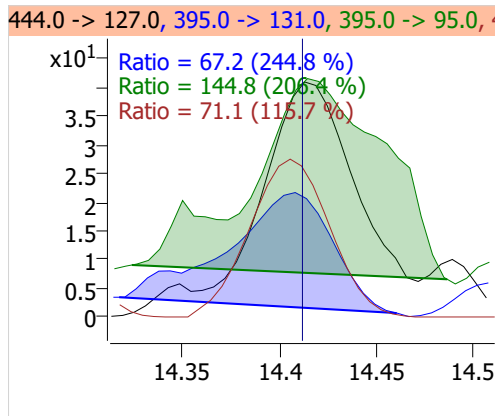
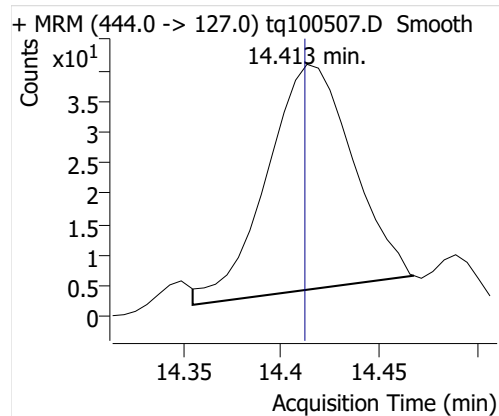
446.0 -&gt; 128.0, 446.0 -&gt; 96.0, 407.0 -&gt; 69.0, 4



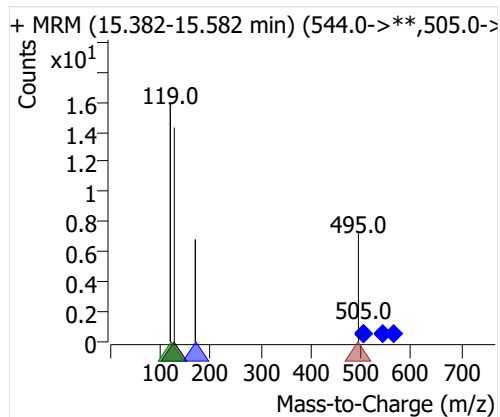
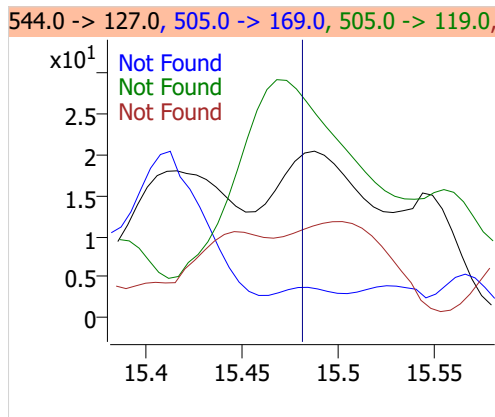
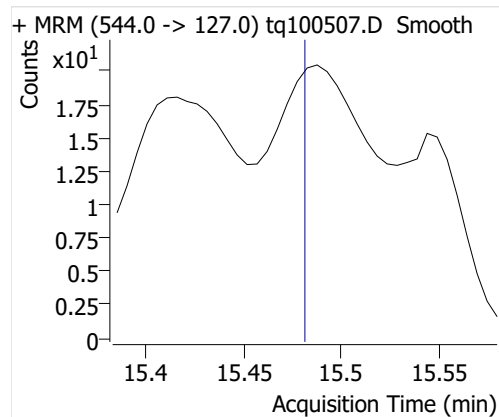
+ MRM (14.336-14.506 min) (446.0-&gt;\*\*,407.0-&gt;



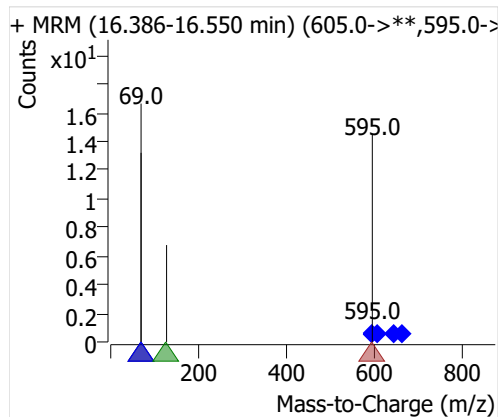
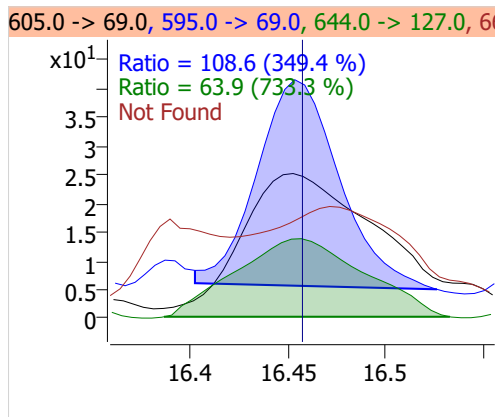
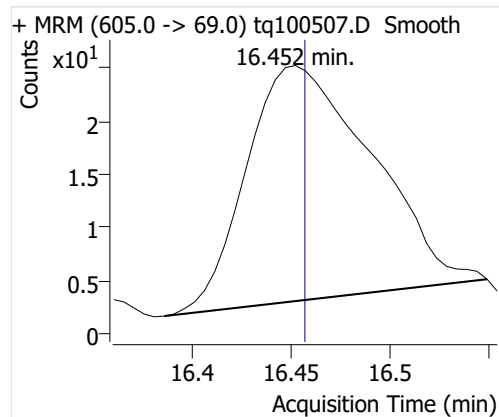
## 8:2 FTOH



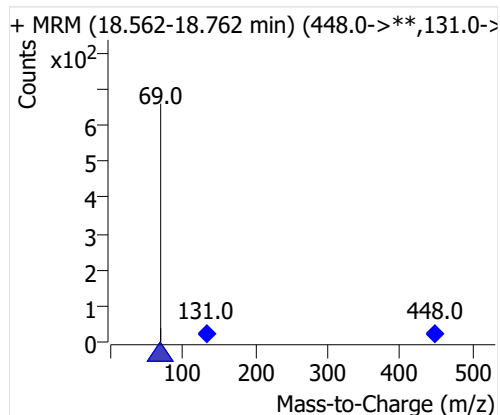
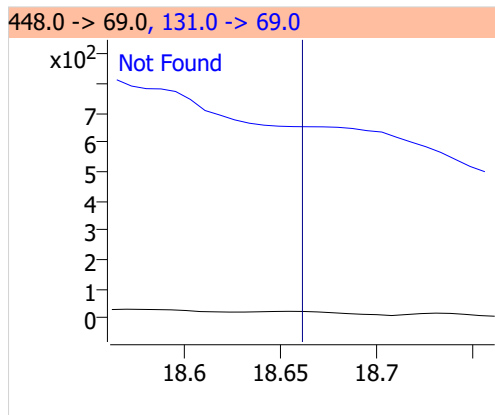
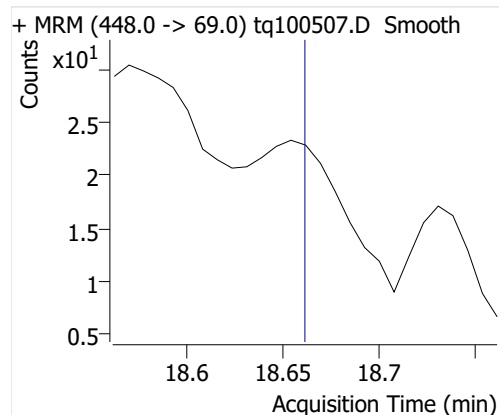
## 10:2 FTOH



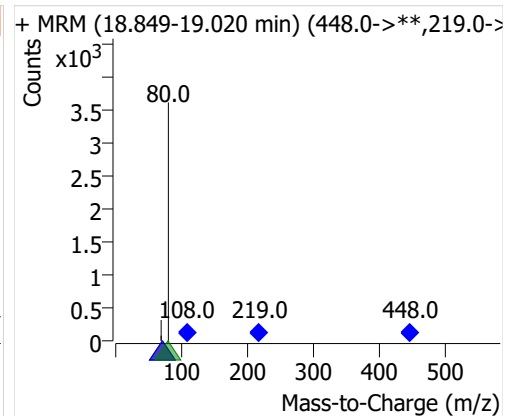
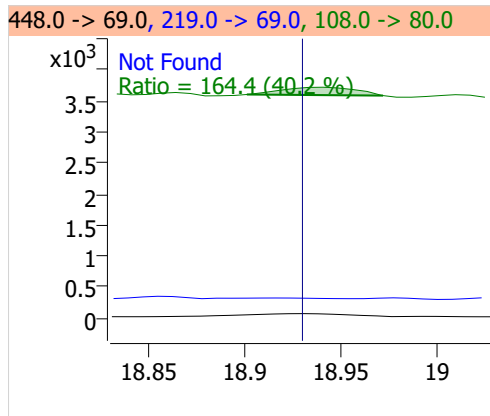
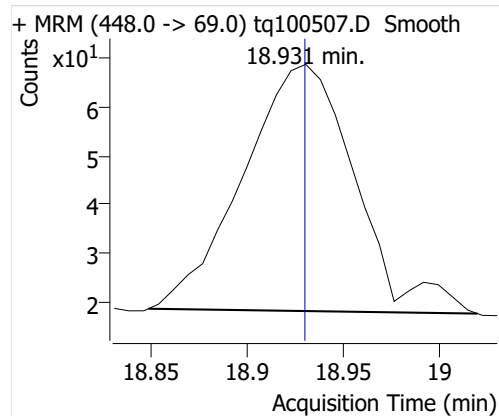
## 12:2 FTOH



## NMeFOSA



## NETFOSA

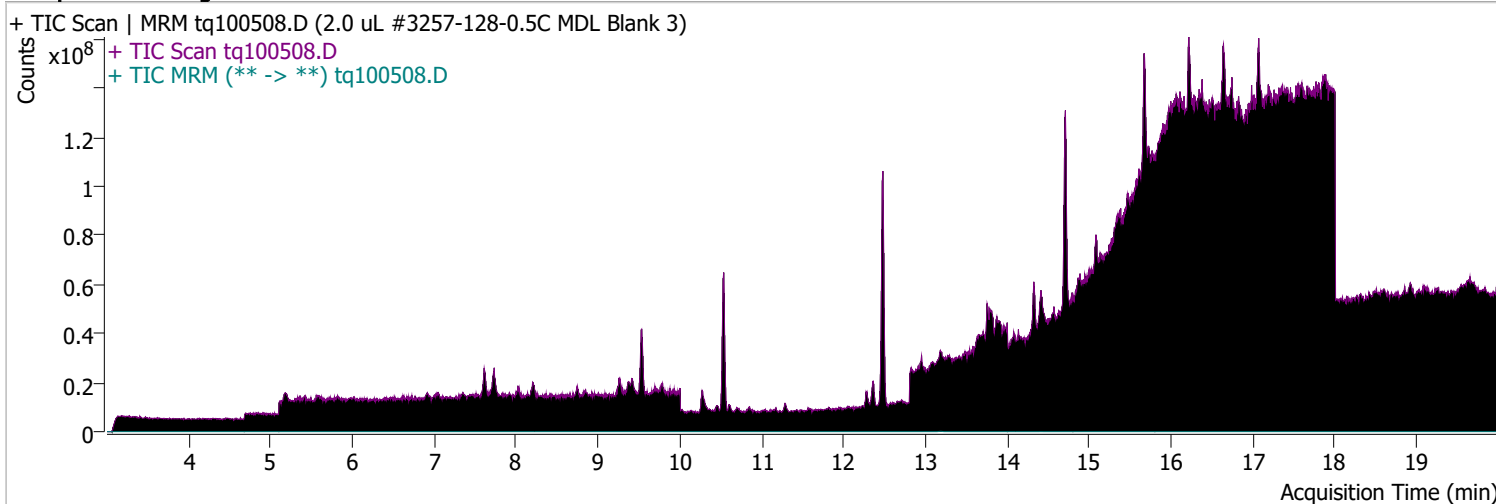




# Quantitative Analysis Sample Report

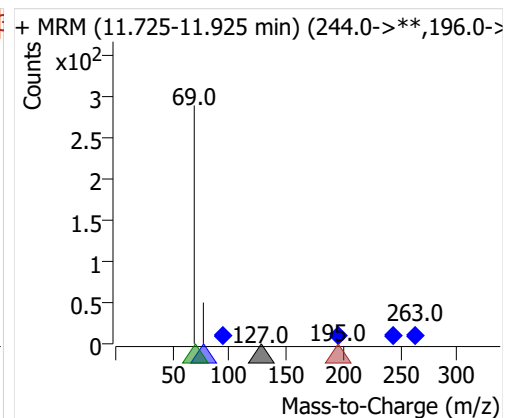
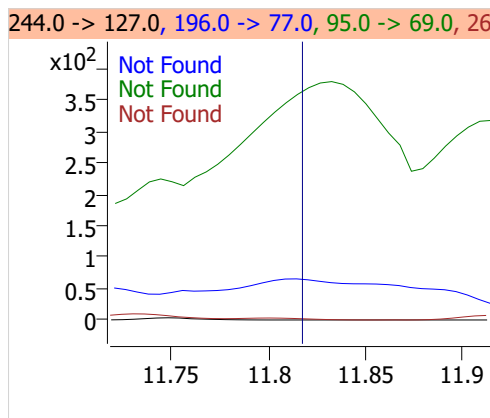
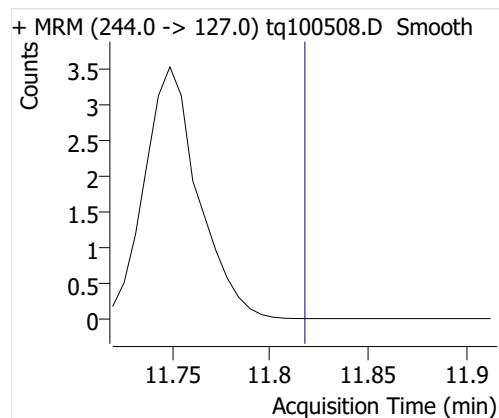
Batch Path	D:\MassHunter\GCMS\1\data\04OCT22\QuantResults\MDLMARKES.batch.bin		
Analysis Time	10/12/2022 1:21 PM	Analyst Name	ES-AREA1\US32_USR_INS22923
Report Time	10/20/2022 3:03:55 PM	Reporter Name	ES-AREA1\US32_USR_INS22923
Last Calib Update	10/3/2022 8:55 AM	Batch State	Processed
Quant Batch Version	10.1	Quant Report Version	10.1
Acq. Time	10/5/2022 12:48 PM	Data File	tq100508.D
Sample Type	Sample	Sample Name	2.0 uL #3257-128-0.5C MDL Blank 3
Dilution	1	Acq. Method	tq22m0930marks

## Sample Chromatogram

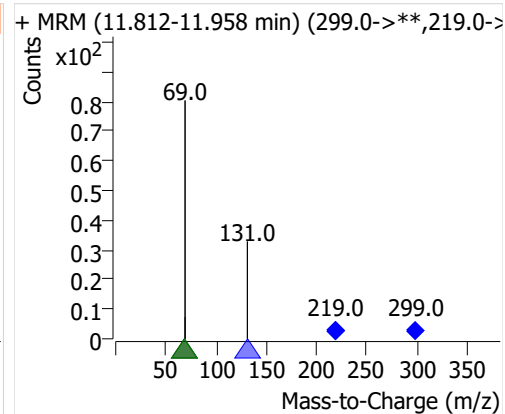
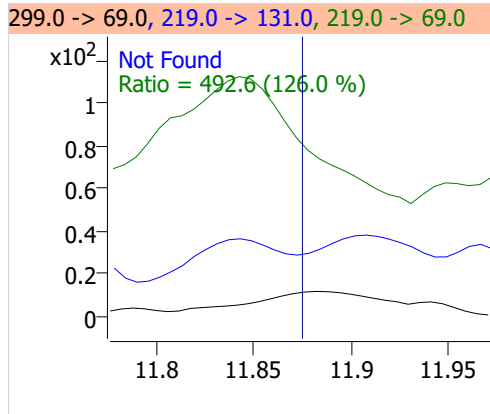
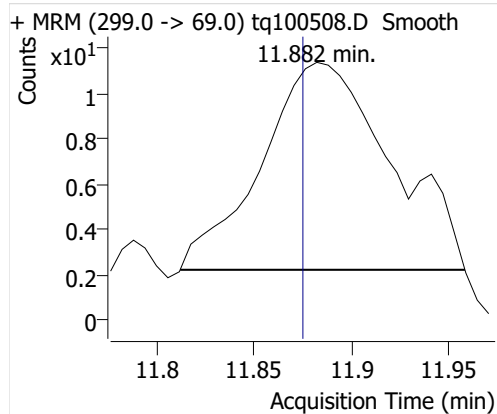


Compound	ISTD	RT	Resp.	ISTD Resp.	Resp. Ratio	Final Conc	Units
4:2 FTOH	6:2 FTOH-C13			55185		ND	ng
5:2sFTOH	6:2 FTOH-C13	11.882	42	55185	0.0008	0.0032	ng
7:2sFTOH	6:2 FTOH-C13	13.151	27	55185	0.0005	0.0010	ng
6:2 FTOH	6:2 FTOH-C13	13.209	1788	55185	0.0324	0.0321	ng
8:2 FTOH-C13	6:2 FTOH-C13	14.412	20171	55185	0.3655	1.0475	ng
8:2 FTOH	6:2 FTOH-C13	14.395	84	55185	0.0015	0.0055	ng
10:2 FTOH	6:2 FTOH-C13	15.472	55	55185	0.0010	0.0095	ng
12:2 FTOH	6:2 FTOH-C13			55185		ND	ng
NMeFOSA	6:2 FTOH-C13	18.670	37	55185	0.0007	0.0024	ng
NEtFOSA	6:2 FTOH-C13	18.924	173	55185	0.0031	0.0026	ng

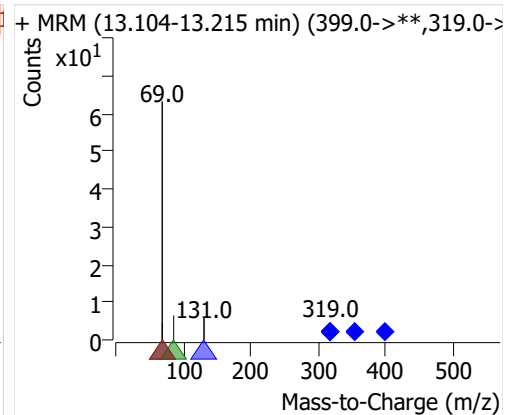
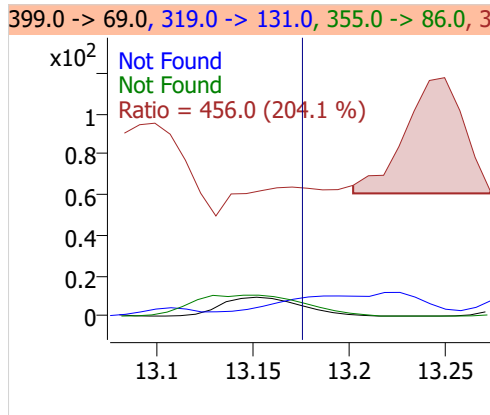
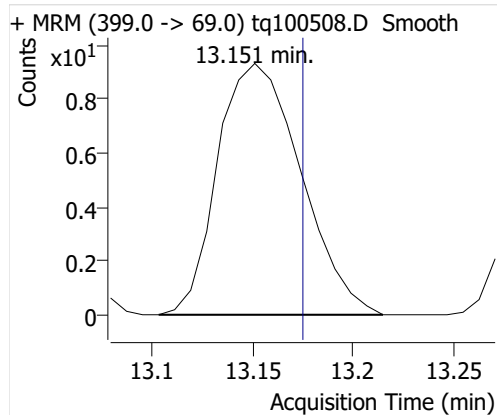
## 4:2 FTOH



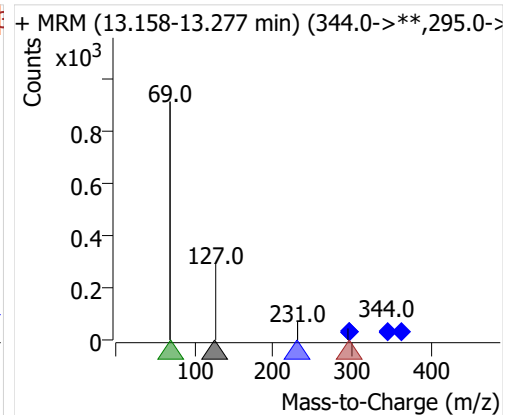
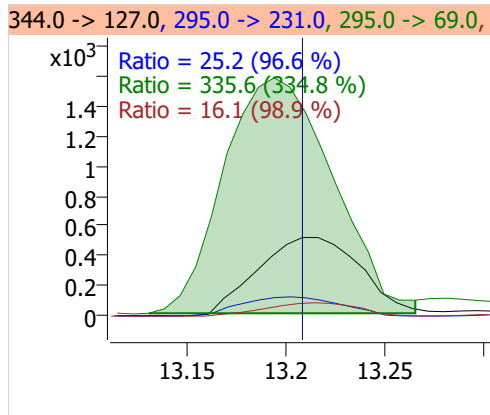
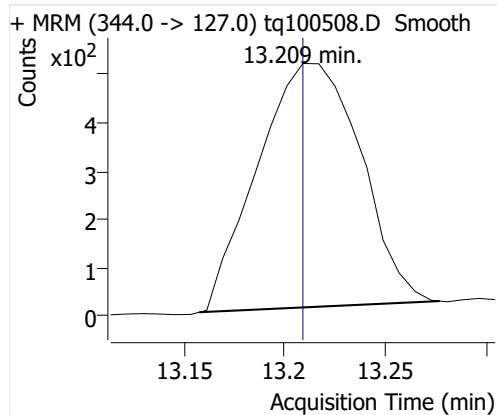
## 5:2sFTOH



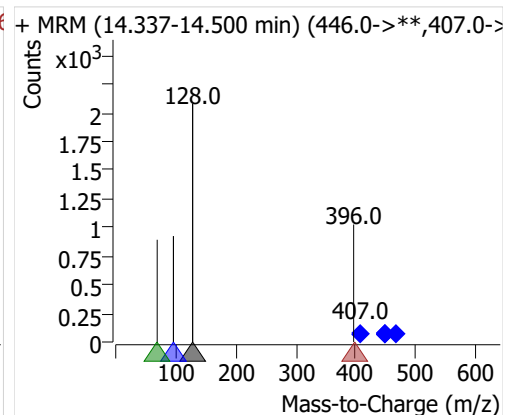
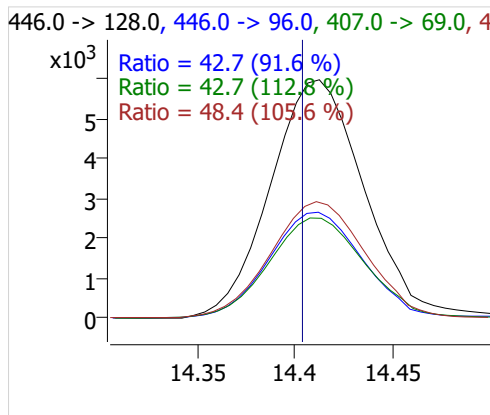
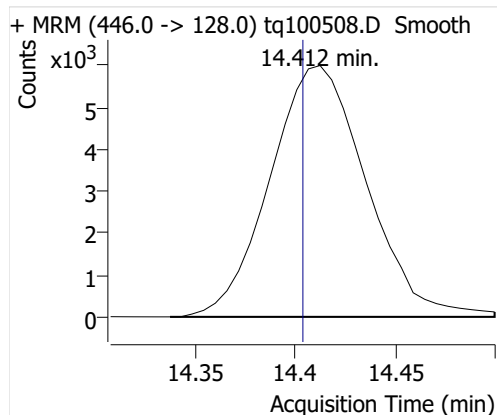
## 7:2sFTOH



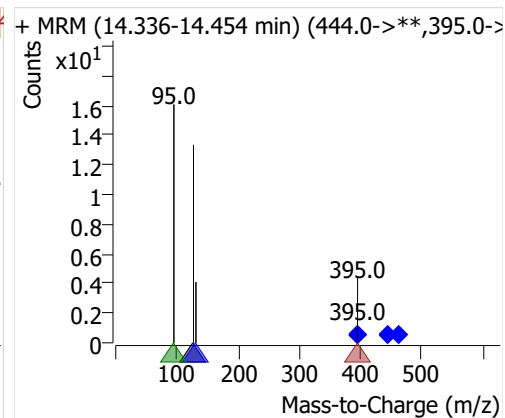
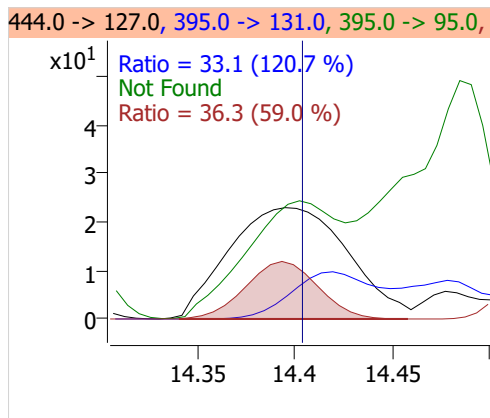
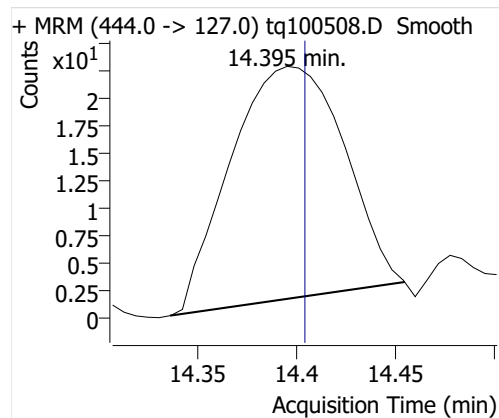
## 6:2 FTOH



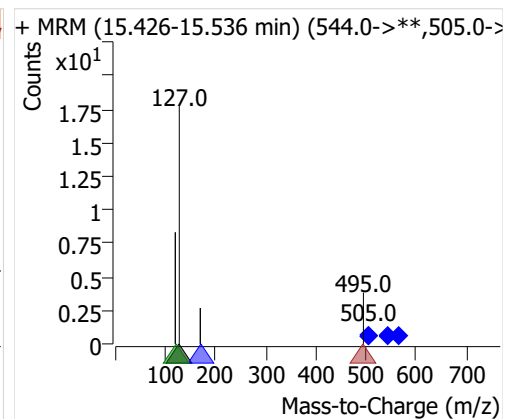
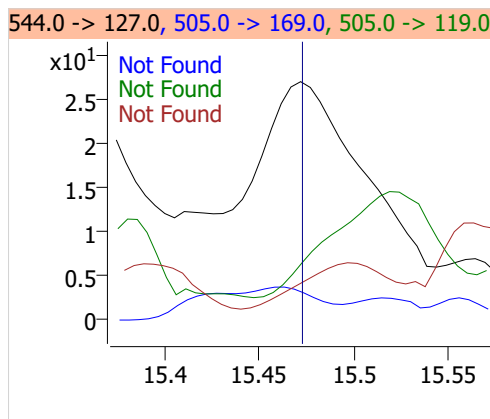
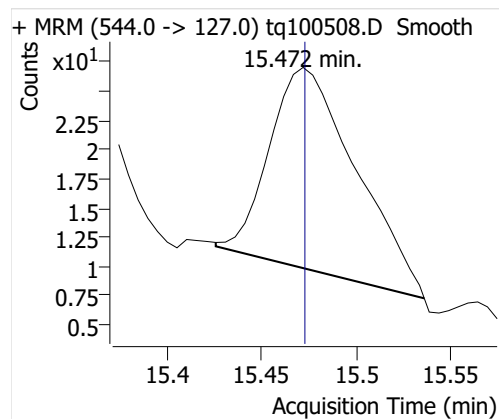
## 8:2 FTOH-C13



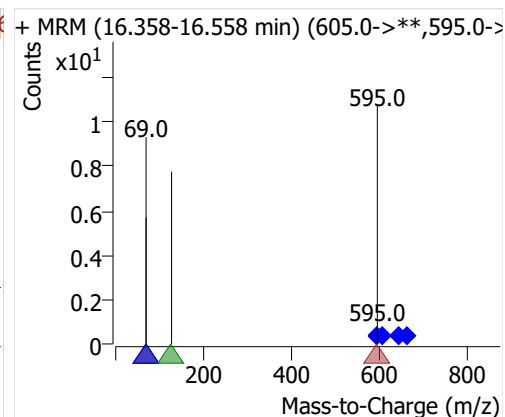
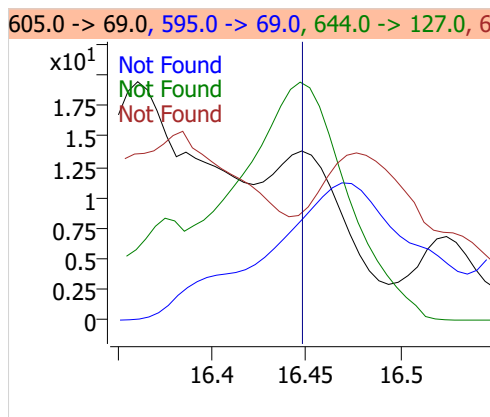
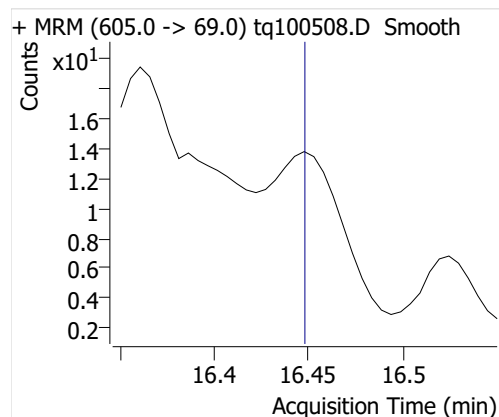
## 8:2 FTOH



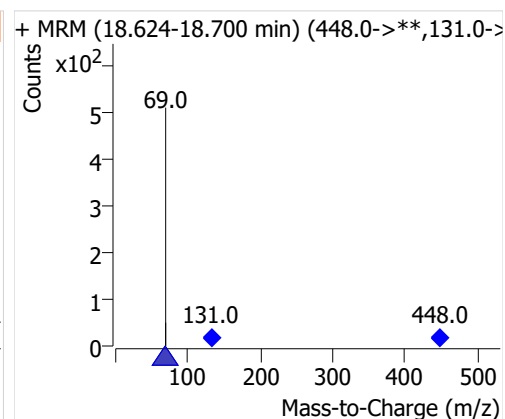
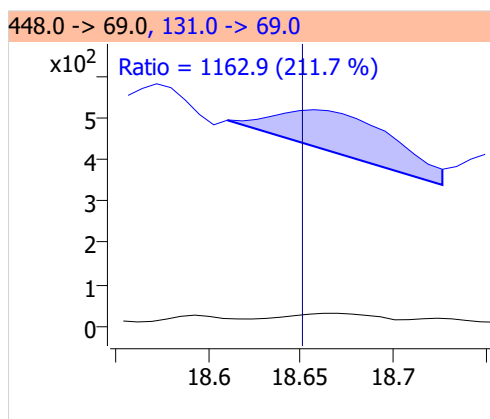
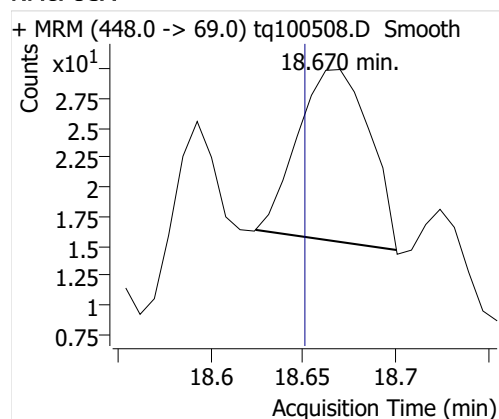
## 10:2 FTOH



## 12:2 FTOH



## NMeFOSA



## NETFOSA

